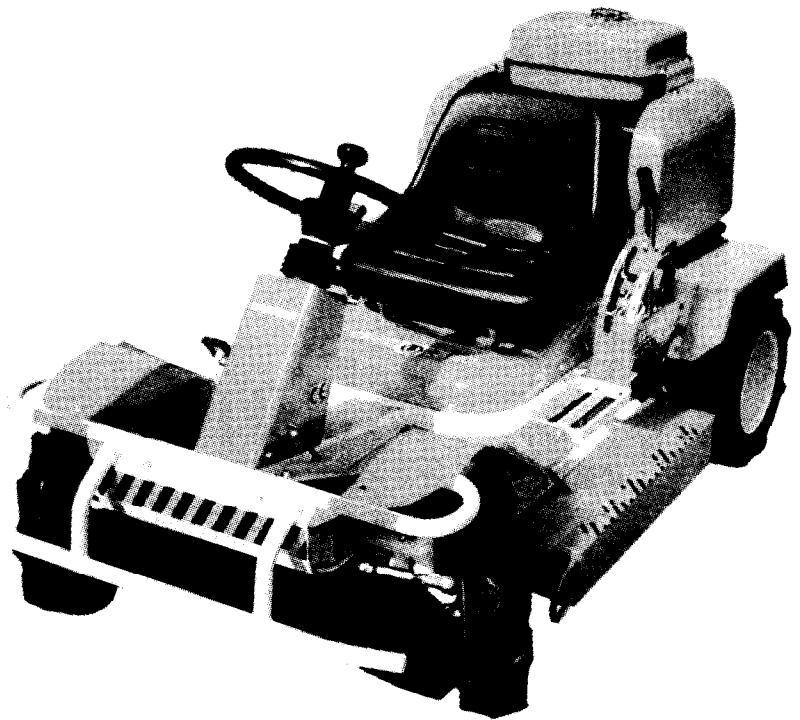


**YANMAR
RIDING
GRASS
MOWER**

YANMAR

PARTS CATALOG



MODEL

YRM831VH

Published

FEB., 1999

NPC-3661

YOUR PARTS ORDERING

- When placing your parts order with us, Please contact us upon confirming the Model, Part No, Description and Qty of the parts you want to order by this parts catalog.
First look for the illustration of the part you want. Then you can find out the necessary informations by tracing the illustration No., as each illustration corresponds to the parts list on the following page.
- All parts the illustrations of which are not numbered shall not be sold separately.
- You are asked to prepare parts, especially consumable parts in the demand season earlier, as orders will come with a rush in this season.
- Parts other than those due to misshipping on your part shall not be allowed to returned in principle.
- Please surely use YANMAR Genuine Parts in any YANMAR Product.
(Use of similar goods (parts) on the market causes earlier damage or worsening of performance.)

HOW TO READ THIS PARTS CATALOG

- In the case where a Ref. No. given in the list does not agree with the corresponding Sketch No. in illustration (no suffix number as shown below), an illustration for such a New Part has been omitted only in the case of a parts change for which Interchangeability Symbol N, R or K is given.

[Example]

Sketch No. in Illustration	Ref. No. in List	
1	1	(Before the change)
	1	(After the change)
2	2	

- Indication and meaning of level Level

-A number of dots indicated is called the level which refers to the assembly-component relation of an assembly part.
(“.” refers to an assembly part.)
-Refers to a component included in an assembly part indicated by one dot (•).
-Refers to a component included in a complete part indicated by two dots (••).
(It indicates a sub-component of pertinent assembly part indicated by one dot (•).)

- Indication and meaning of interchangeability symbol
(Given under the column “I” next to the quantity column in the list)

In the case where a parts change took place, one of the following interchangeability symbols is indicated for that part:

Symbol	Interchangeability	Contents note
N	New Old	New Part is interchangeable for Old Part but not interchangeable conversely.
P	New Old	Same as symbol N but supply of Old Part is suspended and New Part is sold in the future.
Q	New Old	New Part is not interchangeable for Old Part but interchangeable conversely.
R	New Old	New Part is interchangeable for Old Part and vice versa.
S	New Old	New Part is not interchangeable for Old Part and vice versa.
W		Part newly added.
Z		Part discontinued.
F		Not interchangeable by single part but interchangeable by set of the related parts.
K		Changed only in quantity used.

- Remarks (column “R” given at the right end of the list)
9-1) A numerical or alphabetic character (symbol) may be indicated under the column “R”.
9-2) A comment (remarks) for a part in question is given at the lower part of the list, following a symbol identical to the aftermentioned symbol when a symbol is indicated under the column “R”.
- Virtual No. in illustration

A Sketch No. in illustration containing an encircled numeral indicates other related Group No.
[Example] indicated.

- Change Effective Machine No.
When a part is changed, a Change Effective Machine No. of such a model for which a New Part is applied is indicated as follows:
[Example] Model columns A ~ F
(Model indication is given in two kinds, namely, 4-model and 6-model indications, correspond to A ~ F in front of Change Effective Machine No..)

4-model Indication	6-model Indication
(A) =	(A) = (D) =
(B) =	(B) = (E) =
(C) =	(C) = (F) =
(D) =	

[Example] A=F610001 B=F612001
Model column A indicates that a parts change is put into effect from Machine No. 610001 and on. And moreover Model column B indicates that a parts change is put into effect from Machine No. 612001 and on.

[Classification]
E Engine No.
F Machine Body No. } indicated.
R Rotary Unit No.

- Additional Group No. found in the Revised Edition
Kindly understand that a Group No. other than consecutive numbers has been entered in the case where the corresponding Group is added within the pertinent Section.

[Example]
Section
BODY SECTION
Group No. Group name
46. ENGINE FIXTURE & BATTERY
47. FRAME & HYDRAULIC PUMP
48. BEVEL GEAR CASE
49. TRANSM. CASE & RUNNING CLUTCH
50. CONTROL LEVERS
51. CRAWLER
54. ENGINE FIXTURE & BATTERY (Group added for the YSR1300-N)
55. CONTROL LEVERS (Group added for the YSR1300-N)
SNOW REMOVAL SECTION
52. CHUTE
53. SNOW REMOVAL FRAME & BLOWER
Additional Groups are indicated.

Owing to the improvement of YANMAR Product involved or its parts, the contents of this Parts Catalog may be altered without prior notice to you.

SPECIFICATIONS

Model		YRM831VH	
Size of the body	The total length	mm	1800
	The total width	mm	950
	The total height	mm	900
	The lowest height from the ground	mm	120
	The seat height from the ground	mm	510
Body weight		kg	240
Mowing part	Cutting width		mm 830
	Rotation speed		rpm 1355(Right)
	Rotary blade foam		Fixed blade
	Cutting height		mm 50 - 85
Driving part	Tire	Front wheel	mm AG350 - 7
		Rear wheel	mm AG16×700×8
	Tread	Front wheel	mm 820
		Rear wheel	mm 760
	Wheel base		mm 1140
	The smallest rotation radius	Right	mm 1900
		Left	mm 1900
	Wheel drive method		HST rear wheel drive
Forward movement speed		km/h 0 - 7.2	
Backward movement speed		km/h 0 - 2.8	
Operating system	Method of operation		Rack & Pinion method
	Parking brake		HST built - in disk brake
	Cutting height adjustment lever		4 level lever
	Engine start method		mm Cell motor
	Diff		Oil pressure dynamic diff
Steering diameter		mm 380	
Battery		28A19L	
Engine	Make		Kawasaki
	Type		Vertical, air - cooled, 4 - cycle gasoline
	Output		hp 14
Clutch	Cutting part		Brake coupling belt tension

Note : This is a preliminary brochure and subject to change without notice.

CONTENTS

YOUR PARTS ORDERING SPECIFICATIONS

ENGINE UNIT(FC420V-DG80)

GROUP NO. GROUP NAME

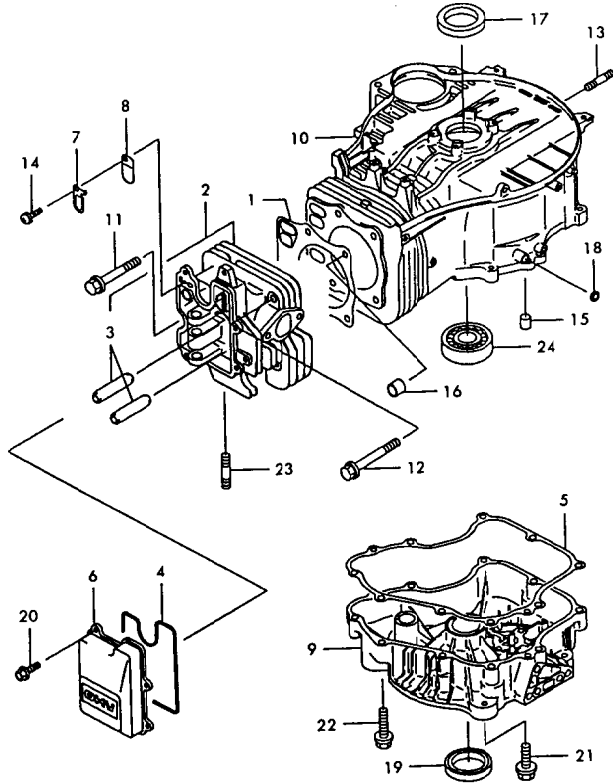
1. CYLINDER & CRANKCASE
2. PISTON & CRANKSHAFT
3. VALVES & CAMSHAFT
4. LUBRICATING SYSTEM
5. COOLING DEVICE
6. ELECTRICAL PARTS
7. CONTROLLING DEVICE
8. CARBURETOR
9. AIR FILTER & MUFFLER
10. FUEL TANK & FUEL VALVE
11. STARTER
12. LABEL
13. LABEL(SAFETY)

BODY SECTION

14. FRONT WHEEL, STEERING
15. ROTARY
16. REAP HEIGHT ADJUSTMENT
17. REAR WHEEL, HST, TRANSMISSION
18. HST CONTROL
19. FRAME, COVER, SEAT
20. ENGINE RELATED
21. LABELS
22. LABELS(PRODUCT LIABILITY)

PARTS INDEX

1. CYLINDER & CRANKCASE



N135367

1B03
(1B02)
NPC-3661

1. CYLINDER & CRANKCASE

99.01.28

(A)=FC420V-DG80 (D)=
(B)= (E)=
(C)= (F)=

REF. NO.	LEV. 0	PART NO.	DESCRIPTION	Q'TY					I	P	U	A	R
				(A)	(B)	(C)	(D)	(E)					
1	.	121100-42096	GASKET-HEAD	1									
2	.	121100-86026	HEAD-COMP-CYLINDER	1									
3	..	124900-22107	GUIDE-VALVE	2									
4	.	121100-92433	GASKET,ROCKER CASE	1									
5	.	121100-92947	GASKET	1									
6	.	121102-22070	CASE-ROCKER	1									
7	.	121327-02055	PLATE	1									
8	.	121612-62113	VALVE	1									
9	.	124901-56174	COVER-CRANKCASE	1									
10	.	124912-06106	CRANKCASE-COMP	1									
11	.	129200-22273	BOLT	3									
12	.	129200-22310	BOLT	2									
13	.	129200-42083	STUD,6X14	4									
14	.	129200-92308	SCREW	1								5	
15	.	129204-31263	PIN	2								5	
16	.	129204-31266	PIN	2									
17	.	129204-92096	SEAL-OIL	1									
18	.	129204-92097	SEAL, OIL	1								5	
19	.	129204-92227	SEAL-OIL	1									
20	.	12130B-06140	BOLT-FLANGED	4								10	
21	.	26106-080252	BOLT M 8X 25 PLATED	4								10	
22	.	12130T-08450	BOLT-FLANGED	9								10	
23	.	26216-080202	STUD M 8X 20 PLATED	2								1	
24	.	24101-063074	BEARING	1								1	

N135367

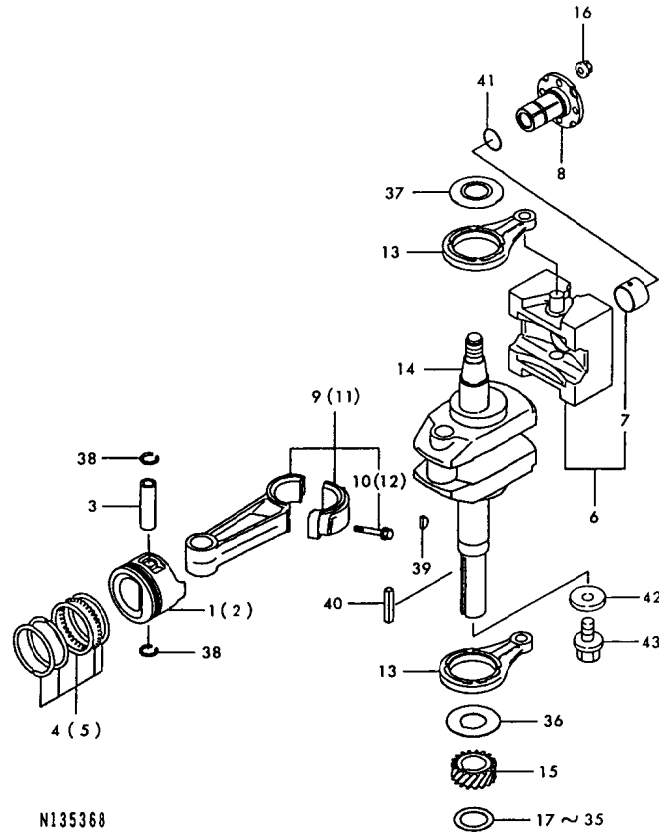
2. PISTON & CRANKSHAFT

1804
1802
NPC-3661

2. PISTON & CRANKSHAFT

99.01.28

(A)=FC420V-DG80 (D)=
(B)= (E)=
(C)= (F)=



N135368

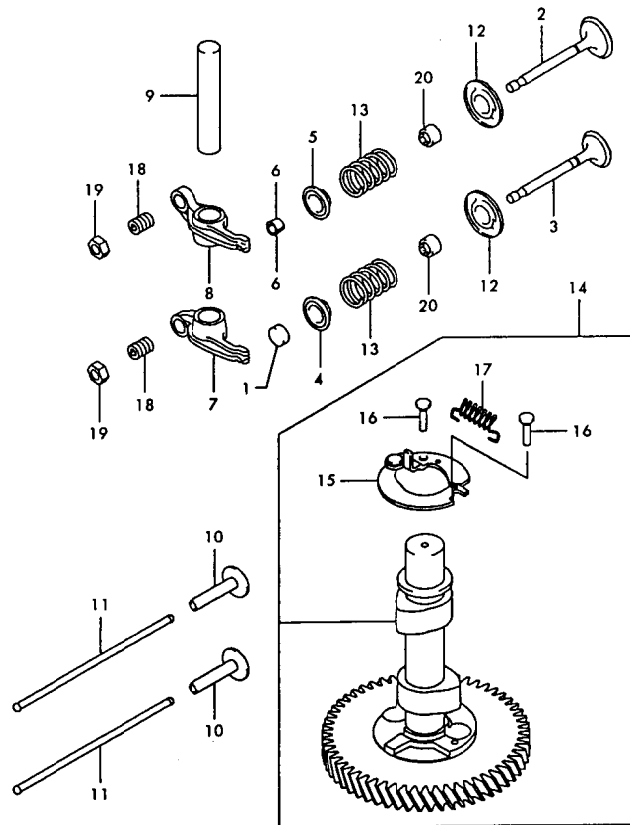
 (1) OVER-SIZE PART.
 (2) UNDER-SIZE PART.

REF. NO.	LEV. 0	PART NO.	DESCRIPTION	-----Q'ITY-----						I	P/U	A	R
				(A)	(B)	(C)	(D)	(E)	(F)				
1	.	1Z1300-12130	PISTON-ENGINE	1									
2	.	1Z1302-92106	PISTON-ENGINE L,0.50	1								(1)	
3	.	1Z1300-22078	PIN-PISTON	1									
4	.	1Z1300-86053	RINGSET-PISTON	1									
5	.	1Z1302-56020	RINGSET-PISTON L,0.5	1								(1)	
6	.	1Z1304-26010	WEIGHT	1									
7	..	1Z9214-12112	BEARING-PLANE	1									
8	.	1Z1310-72088	SHAFT	1									
9	.	1Z1325-16039	ROD-CONNECTING	1									
10	..	1Z9215-02193	BOLT	2									
11	.	1Z1325-16041	ROD-CONNECTING 0.50	1								(2)	
12	..	1Z9215-02193	BOLT	2									
13	.	1Z4610-22077	ROD	2									
14	.	1Z4911-92176	CRANKSHAFT-ASSY	1									
15	.	1Z5905-62101	GEAR-HELICAL	1									
16	.	1Z9201-51193	NUT	4								5	
17	.	1Z9202-52210	SHIM T=1.18	1									
18	.	1Z9202-52211	SHIM T=1.215	1									
19	.	1Z9202-52212	SHIM T=1.25	1									
20	.	1Z9202-52213	SHIM T=1.285	1									
21	.	1Z9202-52214	SHIM T=1.32	1									
22	.	1Z9202-52215	SHIM T=1.355	1									
23	.	1Z9202-52216	SHIM T=1.39	1									
24	.	1Z9202-52217	SHIM T=1.425	1									
25	.	1Z9202-52218	SHIM T=1.46	1									
26	.	1Z9202-52219	SHIM T=1.495	1									
27	.	1Z9202-52220	SHIM T=1.53	1									
28	.	1Z9202-52221	SHIM T=1.565	1									
29	.	1Z9202-52222	SHIM T=1.60	1									
30	.	1Z9202-52223	SHIM T=1.635	1									
31	.	1Z9202-52224	SHIM T=1.67	1									
32	.	1Z9202-52225	SHIM T=1.705	1									
33	.	1Z9202-52226	SHIM T=1.74	1									
34	.	1Z9202-52227	SHIM T=1.775	1									
35	.	1Z9202-52228	SHIM T=1.81	1									
36	.	1Z9202-62156	SPACER	1									
37	.	1Z9202-62160	SPACER	1									
38	.	1Z9203-60080	RING-SNAP	2									
39	.	1Z9203-82094	KEY	1									
40	.	1Z9203-82101	KEY	1									
41	.	1Z9205-52072	RING-O	1									
42	.	1Z9202-22194	WASHER 34X10.5X6	1									
43	.	1Z9200-22263	BOLT M10XP1.5X28	1									

----- REMARKS -----
 (1) オーバーサイズ フォンテマス。 | (1) OVER-SIZE PART.
 (2) アンダーサイズ フォンテマス。 | (2) UNDER-SIZE PART.

N135368

3. VALVES & CAMSHAFT



N135369

1B05
(1B02)
NPC-3661

3. VALVES & CAMSHAFT

99.01.28

(A)=FC420V-DG8D (D)=
(B)= (E)=
(C)= (F)=

REF. NO.	LEV. 0	PART NO.	DESCRIPTION	Q'TY						I	P/U	A	R
				(A)	(B)	(C)	(D)	(E)	(F)				
1	.	1Z1101-22189	CAP_VALVE	1									
2	.	1Z1200-42097	VALVE-INTAKE	1									
3	.	1Z1200-52086	VALVE-EXHAUST	1									
4	.	1Z1200-92058	RETAINER-VALVESPRING	1									
5	.	1Z1200-92060	RETAINER-VALVESPRING	1									
6	.	1Z1201-12052	COLLET	2									
7	.	1Z1201-62054	ARM-ROCKER	1									
8	.	1Z1201-62055	ARM-ROCKER	1									
9	.	1Z1202-02058	SHAFT-ROCKER	1									
10	.	1Z1203-22068	TAPPET	2									
11	.	1Z1311-62056	ROD-PUSH	2									
12	.	1Z1600-72052	SEAT-SPRING	2									
13	.	1Z4907-82076	SPRING-ENGINE VALVE	2									
14	.	1Z4911-82132	CAMSHAFT-COMP	1									
15	..	1Z2111-82083	DECOMPRESSOR	1									
16	..	1Z9204-32113	PIN	2									
17	..	1Z9214-42323	SPRING	1									
18	.	1Z9200-92182	SCREW	2									
19	.	1Z9201-52139	NUT	2									
20	.	1Z9204-92223	SEAL-OIL	2									

N135369

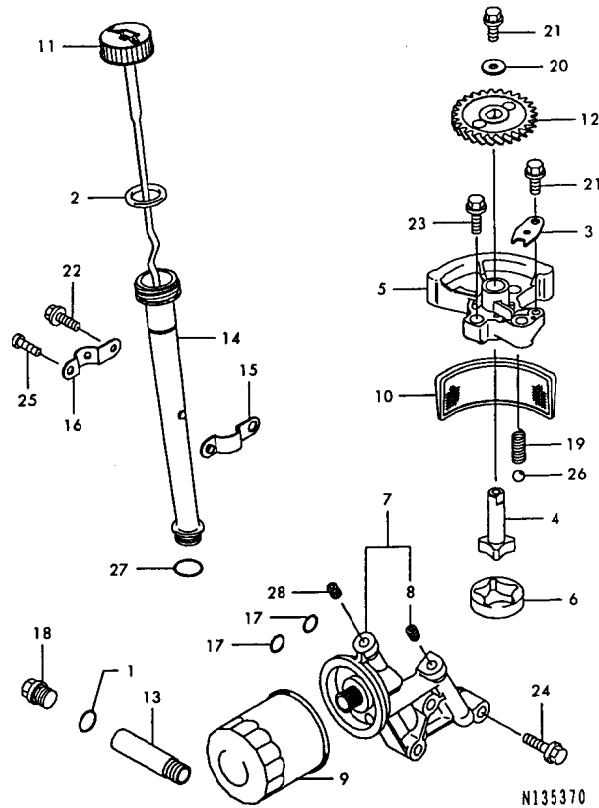
4. LUBRICATING SYSTEM

1806
(1802)
NPC-3661

4. LUBRICATING SYSTEM

99.01.28

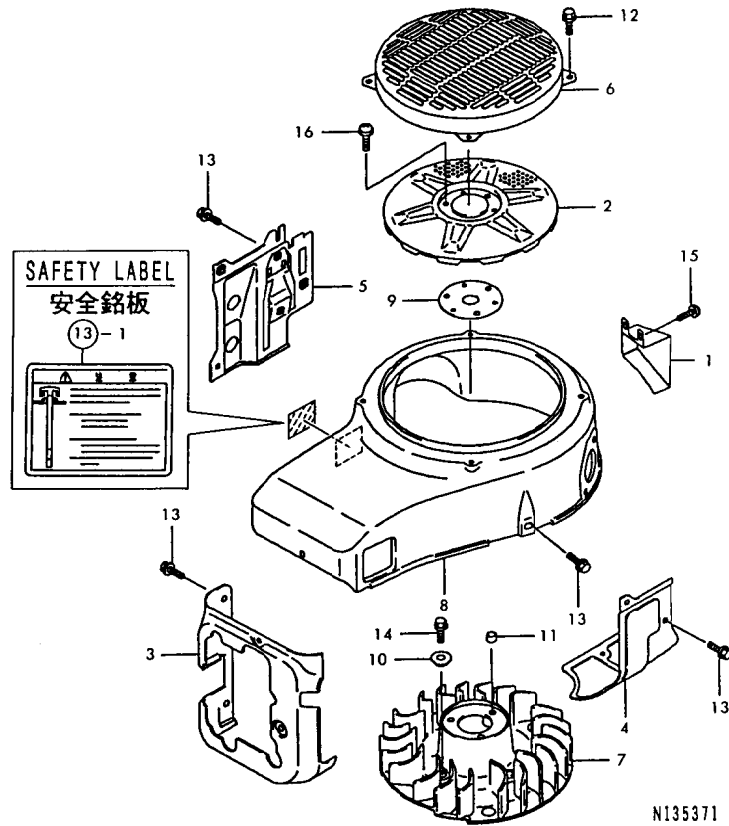
(A)=FC420V-DG80 (D)=
(B)= (E)=
(C)= (F)=



REF. NO.	LEV. 0	PART NO.	DESCRIPTION	Q'TY						I P/U A R
				(A)	(B)	(C)	(D)	(E)	(F)	
1	.	1Z1100-92175	GASKET	1						5
2	.	1Z1100-92346	GASKET,OIL GAUGE	1						5
3	.	1Z1327-02054	PLATE	1						
4	.	1Z1608-22059	PUMP-ASSY-OIL	1						
5	.	1Z1614-22068	COVER-PUMP	1						
6	.	1Z1615-42052	ROTOR-PUMP	1						
7	.	1Z3106-46001	PIPE-COMP	1						
8	.	1Z9206-62211	PLUG	1						
9	.	1Z4906-52078	FILTER-OIL	1						
10	.	1Z4906-52073	FILTER-OIL	1						
11	.	1Z5200-52105	GAUGE	1						
12	.	1Z5905-62090	GEAR-HELICAL	1						
13	.	1Z5907-12063	JOINT	1						
14	.	1Z5923-12062	FILLER	1						
15	.	1Z9203-72199	CLAMP	1						
16	.	1Z9203-72200	CLAMP	1						
17	.	1Z9205-52073	RING-O	2						
18	.	1Z9206-62092	PLUG, DRAIN	1						5
19	.	1Z9214-42391	SPRING	1						
20	.	1Z9220-02035	WASHER	1						
21	.	26106-060102	BOLT M 6X 10 PLATED	2						10
22	.	1Z130B-06140	BOLT-FLANGED	1						10
23	.	1Z130B-08300	BOLT	2						10
24	.	26107-080402	BOLT M 8X 40	3						10
25	.	26557-060082	SCREW M 6X 8	1						10
26	.	24190-100001	BALL 5/16, STEEL	1						1
27	.	1Z670D-20160	O RING	1						10
28	.	1Z9206-62211	PLUG	1						

N135370

5. COOLING DEVICE



N135371

(1) WHEN ORDERING COVER, UPPER, PLEASE

ORDER SAFETY LABEL (ITEM NO. 13
REF NO. 1 PART NO. 125603-12442)
AND PUT IT ON THE COVER.

1B07
(1B02)
NPC-3661

5. COOLING DEVICE

99.01.28

(A)=FC420V-DG80 (D)=
(B)= (E)=
(C)= (F)=

REF. NO.	LEV. 0	PART NO.	DESCRIPTION	Q'TY						I	P/U	A	R
				(A)	(B)	(C)	(D)	(E)	(F)				
1	.	1Z1402-42294	COVER	1									
2	.	1Z1403-72104	SCREEN	1									
3	.	1Z4908-92231	SHROUD-ENGINE	1									
4	.	1Z4908-92232	SHROUD-ENGINE	1									
5	.	1Z4908-92233	SHROUD-ENGINE	1									
6	.	1Z5502-02099	GUARD	1									
7	.	1Z5904-12087	FAN	1									
8	.	1Z5906-62564	HOUSING-FAN	1									(1)
9	.	1Z9202-52003	SHIM T=1.20	1									
10	.	1Z9214-32179	COLLAR	4									
11	.	1Z9214-32182	COLLAR, 6.2X7.8X5	3									
12	.	26106-060102	BOLT M 6X 10 PLATED	4									10
13	.	1Z130G-06120	BOLT-FLANGED	12									10
14	.	26106-060142	BOLT M 6X 14 PLATED	4									10
15	.	1Z224B-04080	SCREW-PAN-WP-CROS	2									
16	.	1Z224B-06160	SCREW-PAN-WP-CROS	3									

REMARKS
(1) アンゼンメイハット SETテ コミュウモン クマサイ。 (1) WHEN ORDERING COVER, UPPER, PLEASE

アンゼンメイハット = コウモクNO. 13 ミタシNO. 1
125603-12442 オ ハリツケテ クマサイ。 | ORDER SAFETY LABEL (ITEM NO. 13
| REF NO. 1 PART NO. 125603-12442)
| AND PUT IT ON THE COVER.

N135371

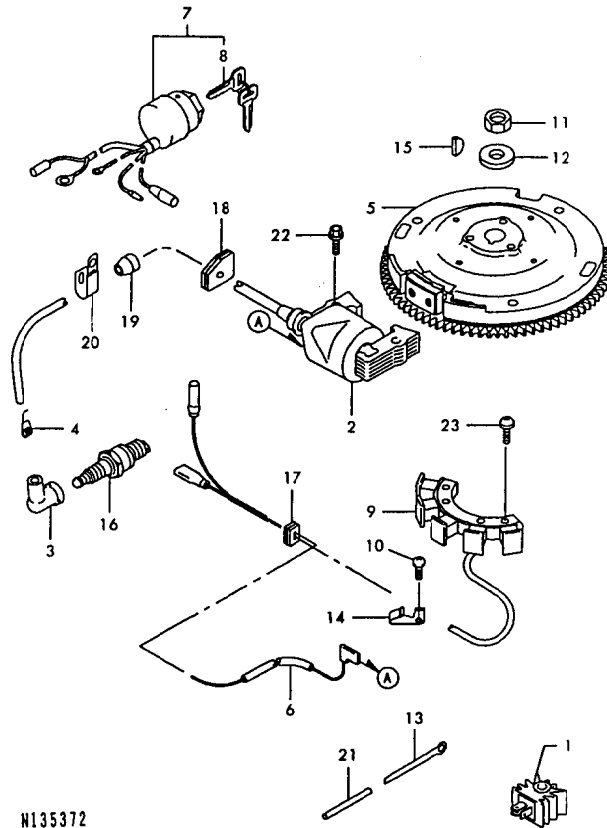
6. ELECTRICAL PARTS

1B08
(1B02)
NPC-3661

6. ELECTRICAL PARTS

99.01.28

(A)=FC420V-DG80 (D)=
(B)= (E)=
(C)= (F)=

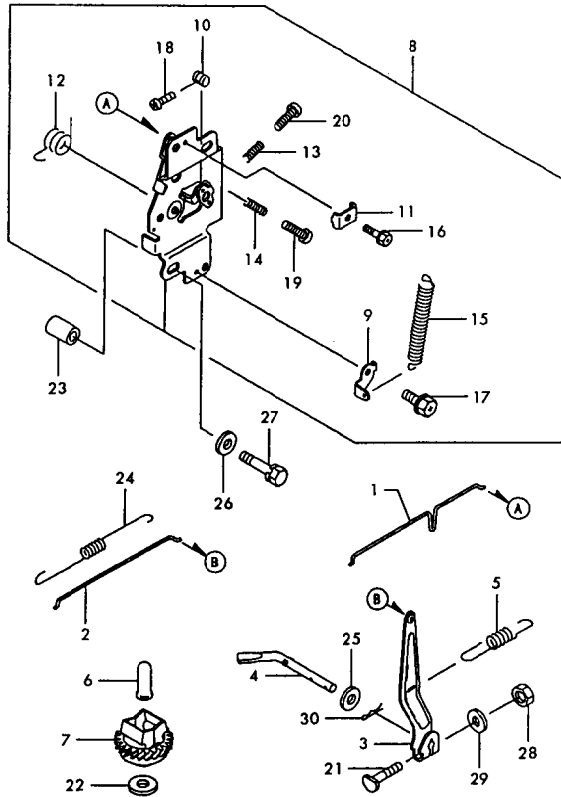


N135372

REF. NO.	LEV. 0	PART NO.	DESCRIPTION	Q'TY						I	P/U	A	R
				(A)	(B)	(C)	(D)	(E)	(F)				
1	-	1Z2106-61020	REGULATOR-VOLTAGE	1									
2	-	1Z2112-12086	COIL-IGNITION	1									
3	-	1Z2113-02066	CAP, PLUG	1								5	
4	-	1Z2116-92004	TERMINAL	1								5	
5	-	1Z2119-32154	FLYWHEEL-ASSY	1									
6	-	1Z2601-12331	WIRE-LEAD	1									
7	-	1Z2700-52056	SWITCH-ASSY-IGNITION	1									
8	-	1Z2700-82055	KEY-LOCK	2									
9	-	1Z5903-12086	COIL-CHARGING	1									
10	-	1Z9200-92308	SCREW	1								5	
11	-	1Z9201-52167	NUT	1									
12	-	1Z9202-22229	WASHER	1									
13	-	1Z9203-72063	CLAMP	1									
14	-	1Z9203-72177	CLAMP	1									
15	-	1Z9203-82094	KEY	1									
16	-	1Z9207-02075	PLUG-SPARK, RN11YC	1									
17	-	1Z9207-12099	GROMMET	1									
18	-	1Z9207-12112	GROMMET	1									
19	-	1Z9207-15170	GROMMET	1									
20	-	1Z9217-02081	CLAMP	1									
21	-	1Z9219-02167	TUBE	1									
22	-	1Z130B-05200	BOLT-FLANGED	2									
23	-	1Z224B-06200	SCREW-PAN-WP-CROS	2									

N135372

7. CONTROLLING DEVICE



N135373

1809
1802
NPC-3661

7. CONTROLLING DEVICE

99.01.28

(A)=FC420V-DG80 (D)=
(B)= (E)=
(C)= (F)=

REF. NO.	LEV. 0	PART NO.	DESCRIPTION	Q'TY						I	P	U	A	R
				(A)	(B)	(C)	(D)	(E)	(F)					
1	.	1Z1616-92130	LINK-CHOKE	1										
2	.	1Z1617-12079	LINK-GOVERNOR	1										
3	.	1Z2118-72055	ARM-ASSY	1										
4	.	1Z3900-32073	ARM-PIVOT	1										
5	.	1Z3912-92011	SPRING-GOVERNOR	1										
6	.	1Z4203-62060	SLEEVE	1										
7	.	1Z4911-02084	GOVERNOR-ASSY	1										
8	.	1Z4911-32098	PANEL-COMP-CONTROL	1										
9	..	1Z1104-72028	BRACKET	1										
10	..	1Z9201-52120	NUT	1								1		
11	..	1Z9203-72020	CLAMP	1										
12	..	1Z9208-12316	SPRING	1										
13	..	1Z9214-42220	SPRING	1										
14	..	1Z9214-42266	SPRING	1									1	
15	..	1Z9214-42281	SPRING	1										
16	..	1Z9215-02182	BOLT, 5X18	1									5	
17	..	1Z1308-05080	BOLT-FLANGED	1										
18	..	1Z2148-04120	SCREW-PAN+	1									10	
19	..	1Z2148-04200	SCREW-PAN+	1									10	
20	..	1Z9200-92113	SCREW	1										
21	.	1Z9200-22269	BOLT	1									10	
22	.	1Z9220-02036	WASHER	1									5	
23	.	1Z9214-32006	COLLAR	2										
24	.	1Z9214-42033	SPRING	1										
25	.	1Z9220-02029	WASHER 6	1									5	
26	.	1Z9220-02070	WASHER	2										
27	.	1Z0014-06350	BOLT 6X35 W/SP.WSHR.	2									10	
28	.	26756-060002	LOCK NUT 6	1									10	
29	.	22137-060000	WASHER 6, POLISHED	1									10	
30	.	22372-060000	SNAP PIN 6	1									10	

N135373

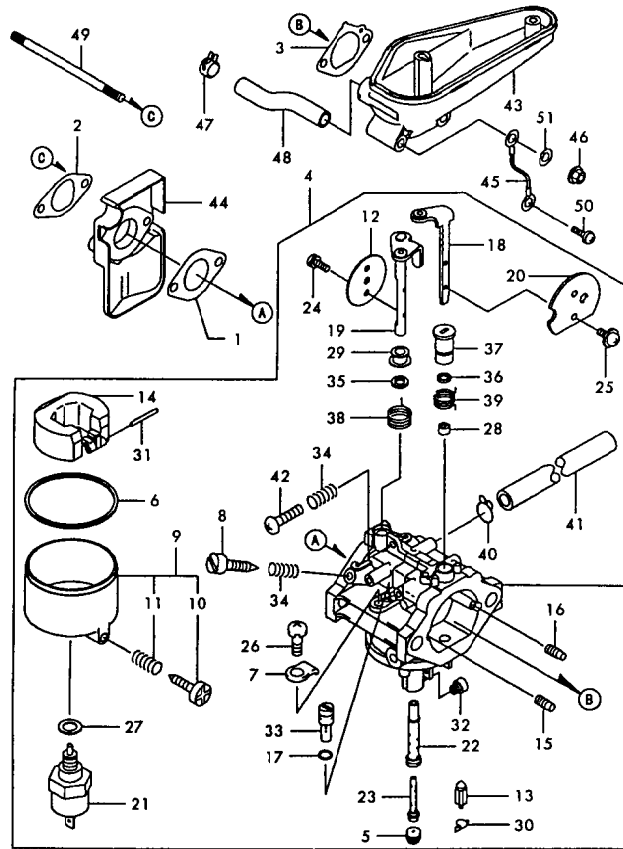
8. CARBURETOR

1B10
(1B02)
NPC-3661

8. CARBURETOR

99.01.28

(A)=FC420V-DG80 (D)=
(B)= (E)=
(C)= (F)=

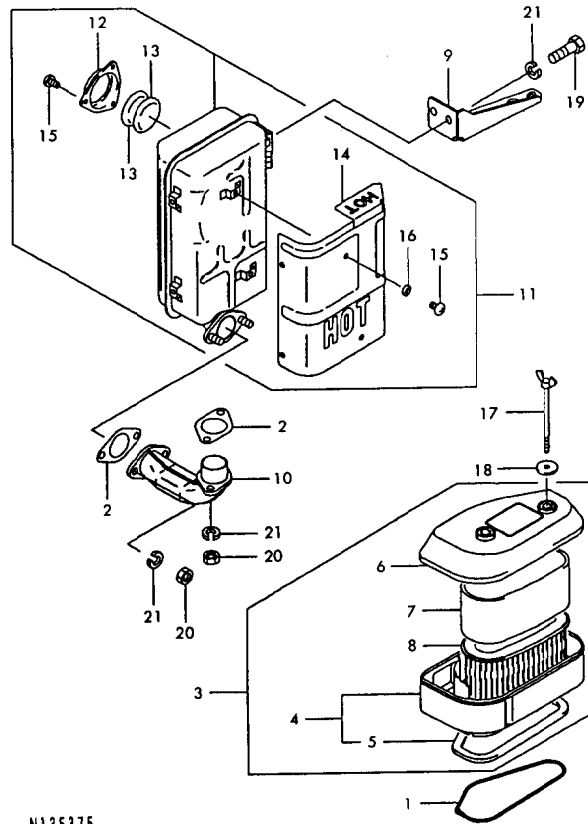


N135374

REF. NO.	LEV. 0	PART NO.	DESCRIPTION	Q'TY						I	P	U	A	R
				(A)	(B)	(C)	(D)	(E)	(F)					
1	.	1Z1106-02339	GASKET,CARBURETOR	1										
2	.	1Z1106-02340	GASKET,INSULATOR	1										
3	.	1Z1106-02341	GASKET,INTAKE PIPE	1										
4	.	1Z1500-32329	CARBURETOR-ASSY	1										
5	..	1Z1100-32101	SEAT-VALVE	1										
6	..	1Z1100-92024	GASKET	1									1	
7	..	1Z1318-32252	PLATE	1										
8	..	1Z1601-42010	SCREW-PILOT AIR	1										
9	..	1Z1602-02109	CHAMBER-FLOAT	1										
10	...	1Z9200-92015	SCREW	1										
11	...	1Z9208-12009	SPRING	1									5	
12	..	1Z1602-52137	VALVE-THROTTLE,#90	1										
13	..	1Z1603-02067	VALVE-FLOAT	1										
14	..	1Z1603-12066	FLOAT	1										
15	..	1Z1603-52056	JET-AIR,#1.8	1										
16	..	1Z1603-52058	JET-AIR,#1.1	1										
17	..	1Z1603-80240	GASKET	1										
18	..	1Z1604-12163	SHAFT	1										
19	..	1Z1604-12215	SHAFT	1										
20	..	1Z1612-62170	VALVE,CHOKE	1										
21	..	1Z2118-82010	SOLENOID	1										
22	..	1Z4912-12188	NOZZLE-MAIN,#9A	1										
23	..	1Z4912-32075	HOLDER-MAIN JET	1										
24	..	1Z9200-92080	SCREW	2									5	
25	..	1Z9200-92081	SCREW	2										
26	..	1Z9200-92244	SCREW	1										
27	..	1Z9202-22231	WASHER	1									5	
28	..	1Z9202-72003	COLLAR	1									5	
29	..	1Z9202-72025	COLLAR	1										
30	..	1Z9203-32067	RING-SNAP	1									1	
31	..	1Z9204-32006	PIN	1									5	
32	..	1Z9206-32257	JET-MAIN,#100	1										
33	..	1Z9206-42101	JET-PILOT,#60	1										
34	..	1Z9208-12009	SPRING	2									5	
35	..	1Z9209-32069	SEAL	1										
36	..	1Z9209-32082	SEAL	1										
37	..	1Z9214-32142	COLLAR	1										
38	..	1Z9214-42037	SPRING	1										
39	..	1Z9214-42160	SPRING	1										
40	..	1Z9217-02023	CLAMP	1										
41	..	1Z9219-02011	TUBE 4.5X6.5X100	1										
42	..	26557-040142	SCREW 4X14	1									10	
43	.	1Z1606-06001	PIPE-INTAKE	1										
44	.	1Z1607-36001	INSULATOR	1										
45	.	1Z2601-12233	WIRE-LEAD	1										
46	.	1Z9201-51193	NUT	2									5	
47	.	1Z9203-72012	CLAMP	1										
48	.	1Z9219-02066	TUBE 11.6X16X116	1										
49	.	1Z1726-61150	BOLT-STUD	2										
50	.	1Z224B-05080	SCREW-PAN-WP-CROS	1										
51	.	22117-060000	WASHER 6	1									10	

N135374

9. AIR FILTER & MUFFLER



N135375

1B11
1B02
NPC-3661

9. AIR FILTER & MUFFLER

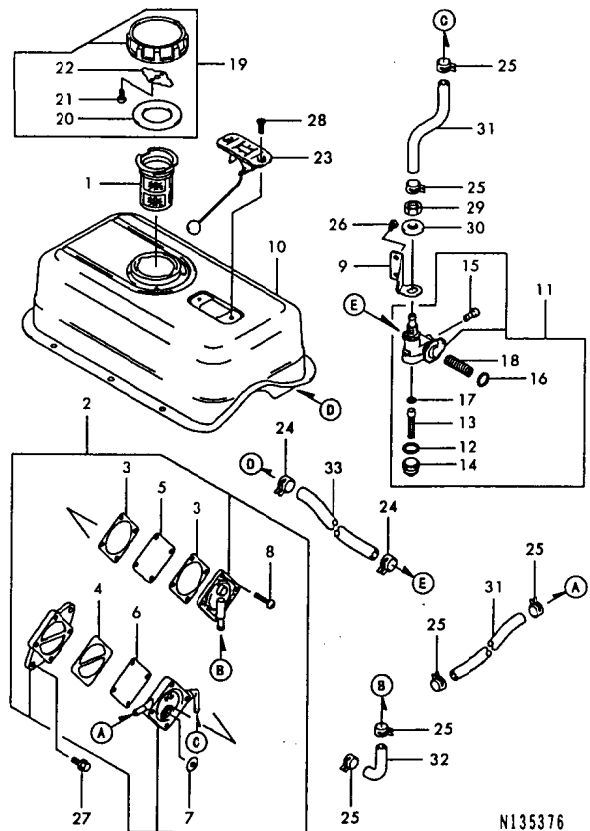
99.01.28

(A)=FC420V-DG80 (D)=
(B)= (E)=
(C)= (F)=

REF. NO.	LEV. 0	PART NO.	DESCRIPTION	Q'TY						I	P/U	A	R
				(A)	(B)	(C)	(D)	(E)	(F)				
1	.	1Z1100-92505	GASKET,AIR FILTER	1									
2	.	1Z1106-02382	GASKET,MUFFLER	2									
3	.	1Z1101-02421	FILTER-ASSY-AIR	1									
4	..	1Z1101-12227	CASE-AIR FILTER	1									
5	...	1Z1106-02446	GASKET	1									
6	..	1Z1101-22223	CAP,AIR FILTER	1									
7	..	1Z1101-32109	ELEMENT-AIR FILTER	1									
8	..	1Z1101-32141	ELEMENT-AIR FILTER	1									
9	.	1Z1104-62160	BRACKET	1									
10	.	1Z4906-22057	PIPE-COMP-EXHAUST	1									
11	.	1Z4906-92209	MUFFLER-ASSY	1									
12	..	1Z1101-22251	CAP,SPARK ARRESTER	1									
13	..	1Z1807-72052	ARRESTER-SPARK	2									
14	..	1Z4910-62471	COVER-MUFFLER	1									
15	..	1Z9200-92166	SCREW	9								5	
16	..	22137-050000	WASHER 5, POLISHED	6								10	
17	.	1Z9200-22274	BOLT	2									
18	.	1Z9202-22220	WASHER	2									
19	.	26206-080162	BOLT M8X16	2								10	
20	.	26716-080002	NUT M 8	4								10	
21	.	22217-080000	SPRING WASHER 8	6								10	

N135375

10. FUEL TANK & FUEL VALVE



N135376

1812
1802
NPC-3661

10. FUEL TANK & FUEL VALVE

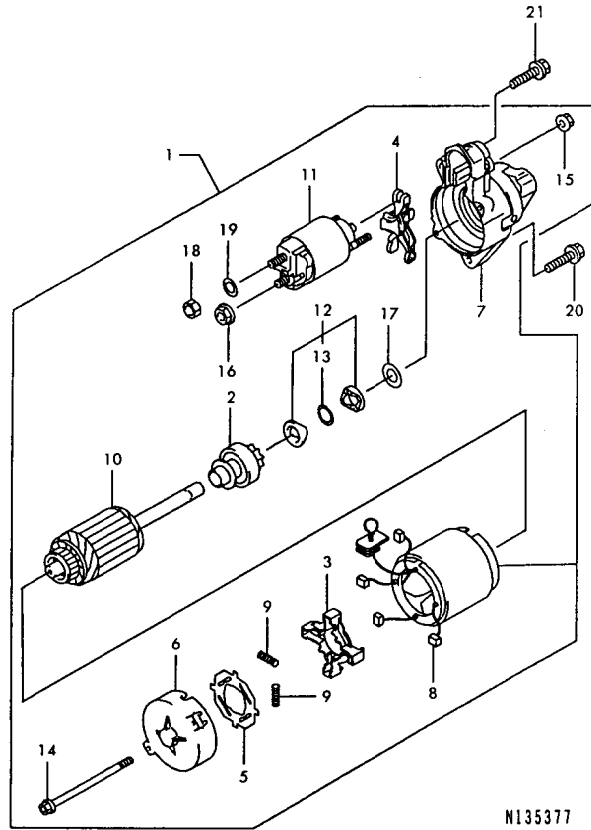
99.01.28

(A)=FC420V-DG80 (D)=
(B)= (E)=
(C)= (F)=

REF. NO.	LEV. 0	PART NO.	DESCRIPTION	-----Q'TY-----						I	P	U	A	R
				(A)	(B)	(C)	(D)	(E)	(F)					
1	.	124901-92107	FILTER-FUEL	1										
2	.	124904-02066	PUMP-FUEL	1										
3	..	121100-92763	GASKET,FUEL PUMP	2										
4	..	121100-92764	GASKET,FUEL PUMP	1										
5	..	124302-82068	DIAPHRAGM	1										
6	..	124302-82069	DIAPHRAGM	1										
7	..	124911-62055	VALVE-ASSY	2										
8	..	129200-92212	SCREW	4										
9	.	124910-52096	BRACKET-TAP	1										
10	.	125100-12258	TANK-COMP-FUEL	1										
11	.	125102-32163	TAP-ASSY	1										
12	..	121100-92526	GASKET	1										
13	..	121404-32070	FILTER	1										
14	..	125103-62073	CUP,FUEL TAP	1										
15	..	129200-92004	SCREW	1										
16	..	129205-51299	RING-O	1										
17	..	129205-52083	RING-O	1										
18	..	129214-42043	SPRING	1										
19	.	125104-82052	CAP-ASSY-TANK	1										
20	..	121100-92115	GASKET	1										
21	..	129200-92021	SCREW	2										
22	..	129208-12036	SPRING	1										
23	.	125200-52100	GAUGE	1										
24	.	129217-02087	CLAMP	2										
25	.	129217-02088	CLAMP	6										
26	.	121308-05080	BOLT-FLANGED	2										
27	.	26106-060142	BOLT M 6X 14 PLATED	2									10	
28	.	12221C-05120	SCREW-CSK-CROS	2										
29	.	26737-120002	NUT M12	1									10	
30	.	124108-12000	WASHER 12	1										
31	.	120070-61000	TUBE,BRAIDED	2									1	
32	.	120070-61000	TUBE,BRAIDED	1									1	
33	.	120070-81000	TUBE-BRAID	1										

N135376

11. STARTER



1B13
(1B02)
NPC-3661

11. STARTER

99.01.28

(A)=FC420V-DG80 (D)=
(B)= (E)=
(C)= (F)=

REF. NO.	LEV. 0	PART NO.	DESCRIPTION	Q'TY						I	P	U	A	R
				(A)	(B)	(C)	(D)	(E)	(F)					
1	.	1Z2116-32073	STARTER-ELECTRIC	1										
2	..	1Z1308-12085	CLUTCH-ASSY	1										
3	..	1Z1309-12068	HOLDER,BRUSH	1								1		
4	..	1Z1316-82131	LEVER,SHIFT	1										
5	..	1Z1607-32098	INSULATOR	1								1		
6	..	1Z1614-62077	COVER-ASSY	1										
7	..	1Z1614-62106	COVER-ASSY	1										
8	..	1Z2103-92059	BRUSH	4								1		
9	..	1Z2104-02052	SPRING,BRUSH	4								1		
10	..	1Z2108-02054	ARMATURE	1										
11	..	1Z2701-02122	SWITCH COMPL.	1									1	
12	..	1Z3208-52097	STOPPER	1										
13	...	1Z9203-32081	RING,SNAP	1									5	
14	..	1Z9200-22277	BOLT	2									1	
15	..	1Z9201-52146	NUT	2									5	
16	..	1Z9201-52147	NUT	1									5	
17	..	1Z9202-22218	WASHER	1									5	
18	..	26706-080002	NUT M 8	2									10	
19	..	22217-080000	SPRING WASHER 8	2									10	
20	.	26106-080352	BOLT M 8X 35 PLATED	1									10	
21	.	26107-080402	BOLT M 8X 40	1									10	

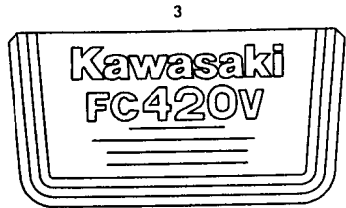
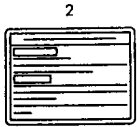
12. LABEL

1B14
(1B02)
NPC-3661

12. LABEL

99.01.28

(A)=FC420V-DG80 (D)=
(B)= (E)=
(C)= (F)=

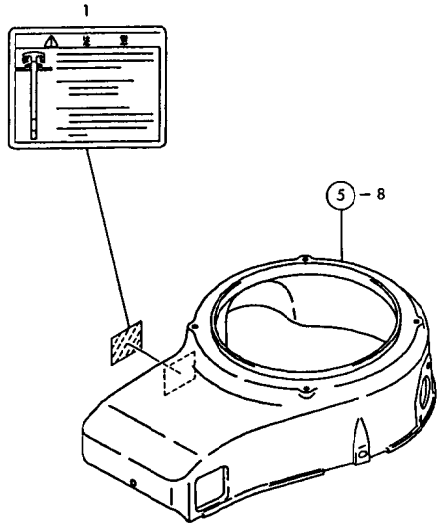


N135378

REF. NO.	LEV. 0	PART NO.	DESCRIPTION	Q'TY						I	P	U	A	R
				(A)	(B)	(C)	(D)	(E)	(F)					
1	-	125603-02390	LABEL, THROTTLE	1										
2	-	125603-12441	LABEL-MANUAL	1										
3	-	125603-82504	LABEL-BRAND	1										

N135378

13. LABEL (SAFETY)



N135379

+-----+
| 1B15 |
| (1B02) |
+-----+
NPC-3661

13. LABEL (SAFETY)

99.01.28

(A)=FC420V-DG80 (D)=
(B)= (E)=
(C)= (F)=

REF. NO.	LEV. 0	PART NO.	DESCRIPTION	-----Q'TY-----						I P/U A R
				(A)	(B)	(C)	(D)	(E)	(F)	
1	.	125603-12442	LABEL-MANUAL	1						

N135379

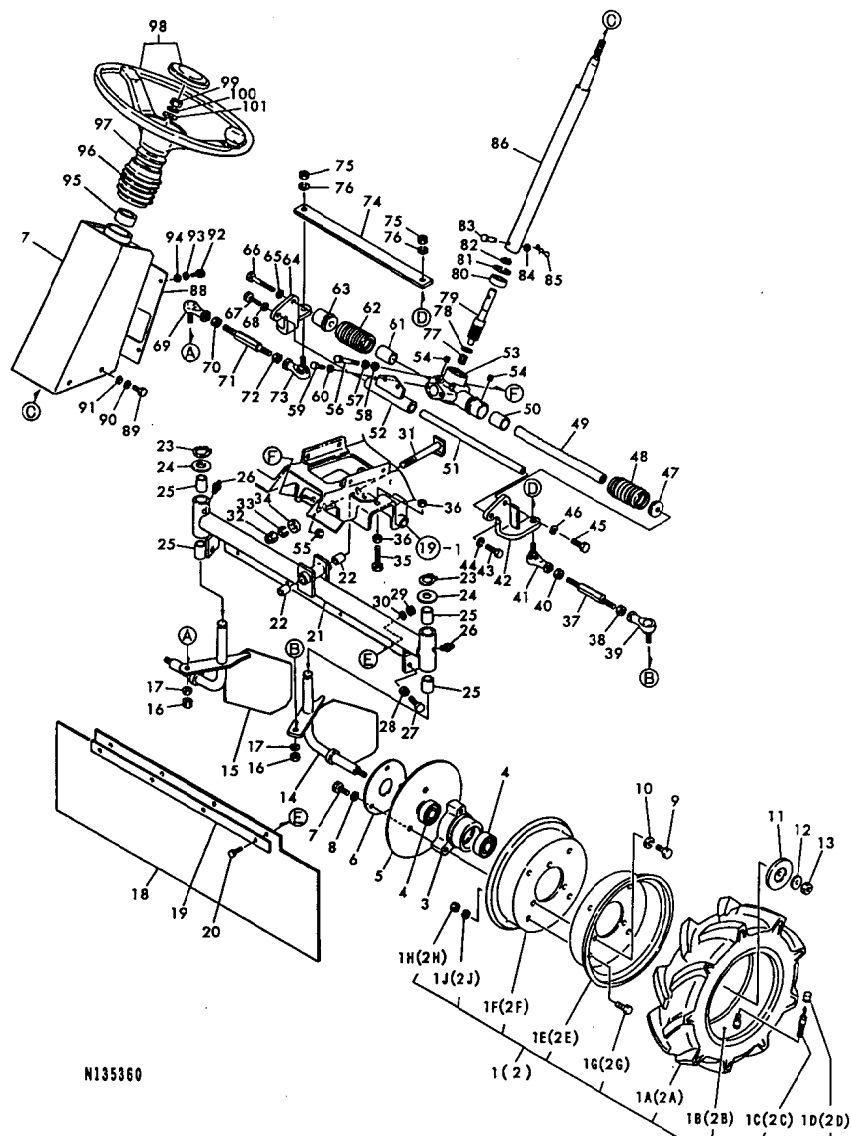
14. FRONT WHEEL, STEERING

1C03
1C02
NPC-3661

14. FRONT WHEEL, STEERING

99.01.28

(A)=YRM831VH (D)=
(B)= (E)=
(C)= (F)=



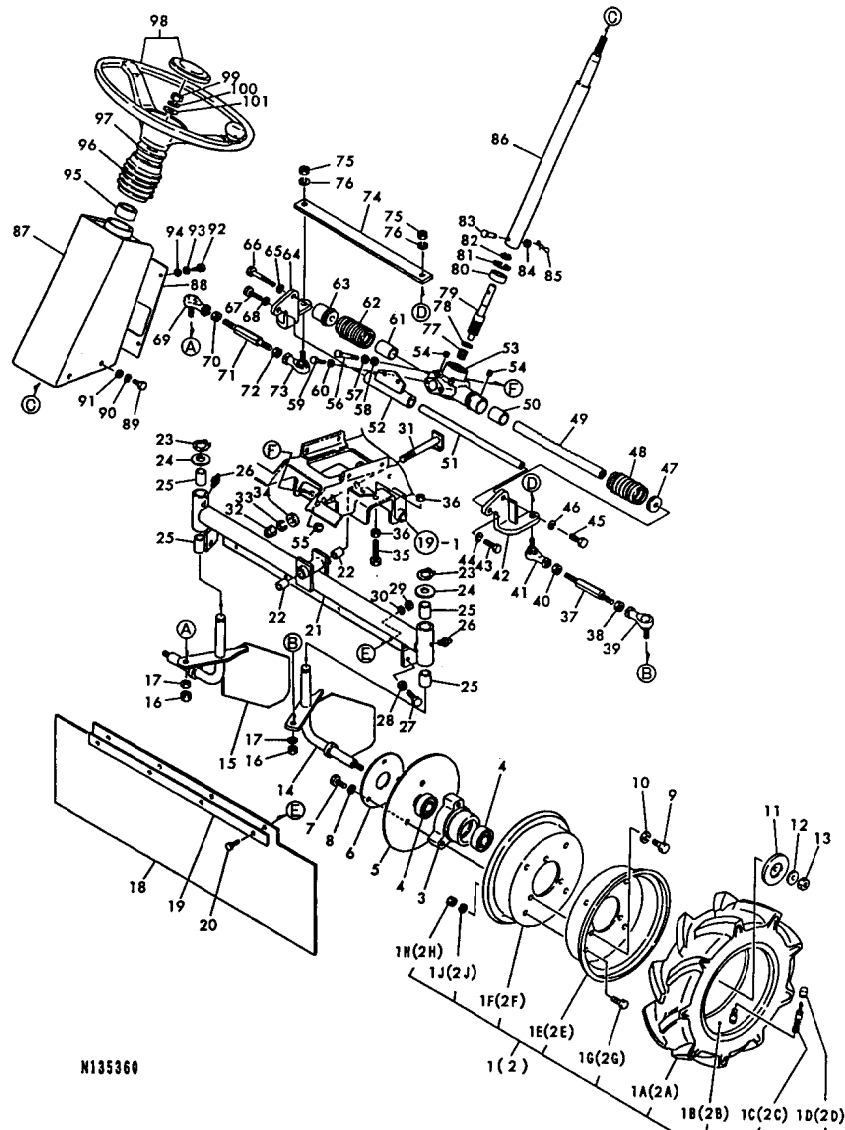
N135360

REF. NO.	LEV. 0	PART NO.	DESCRIPTION	Q'TY						I P/U A R
				(A)	(B)	(C)	(D)	(E)	(F)	
1	.	G41200260200	TIRE L ASSY.	1						
1A	..	G41200260101	TIRE	1						
1B	..	G41200260102	TUBE	1						
1C	..	G41200260103	VALVE	1						
1D	..	G41200260104	CAP, VALVE	1						
1E	..	G41200260105	WHEEL A	1						
1F	..	G41200260106	WHEEL B	1						
1G	..	G40010100816	BOLT M8X16	4						
1H	..	G40020100008	NUT M8	4						
1J	..	G40027100008	SPRING WASHER M8	4						
2	.	G41200260100	TIRE R ASSY.	1						
2A	..	G41200260101	TIRE	1						
2B	..	G41200260102	TUBE	1						
2C	..	G41200260103	VALVE	1						
2D	..	G41200260104	CAP, VALVE	1						
2E	..	G41200260105	WHEEL A	1						
2F	..	G41200260106	WHEEL B	1						
2G	..	G40010100816	BOLT M8X16	4						
2H	..	G40020100008	NUT M8	4						
2J	..	G40027100008	SPRING WASHER M8	4						
3	.	G41200220000	HUB, FRONT WHEEL	2						
4	.	G4040146204A	BALL BEARING 6204	4						
5	.	G41220260200	RUBBER, FRONT WHEEL	2						
6	.	G41200220100	PLATE, FRONT WHEEL	2						
7	.	G40010100816	BOLT M8X16	6						
8	.	G40027100008	SPRING WASHER M8	6						
9	.	G40010100820	BOLT M8X20	6						
10	.	G40027100008	SPRING WASHER M8	6						
11	.	G47292461010	CAP	2						
12	.	G47082200000	WASHER 30X11X3.2	2						
13	.	G40022400010	U-NUT M10	2						
14	.	G41220221000	KNUCKLE L, FRANCE	1						
15	.	G41220220900	KNUCKLE R, FRANCE	1						
16	.	G40020100010	NUT M10	2						
17	.	G40027100010	SPRING WASHER M10	2						
18	.	G41220260400	DRAPPE, FRONT RUBBER	1						
19	.	G47862320000	PLATE, RUBBER DRAPE	1						
20	.	G40010100820	BOLT M8X20	4						
21	.	G41220220100	AXLE, FRONT WHEEL	1						
22	.	G400MB1620DU	BUSH, DU	2						
23	.	G40036100020	RETAINING RING S20	2						
24	.	G40026100020	PLAIN WASHER M20	2						
25	.	G400MB2025DU	BUSH, DU	4						
26	.	G40060670000	NIPPLE M6, GREASE	2						
27	.	G40100000016	BOLT M8X30	2						
28	.	G40020100008	NUT M8	2						
29	.	G40020100008	NUT M8	4						
30	.	G40027100008	SPRING WASHER M8	4						
31	.	G41220220300	PIN, CENTER	1						
32	.	G40022400012	U-NUT M12	1						
33	.	G40027100012	SPRING WASHER M12	1						
34	.	G40026100012	PLAIN WASHER M12	1						
35	.	G40010101035	BOLT M10X35	2						
36	.	G40020100010	NUT M10	4						

** CONTINUE **

N135360

14. FRONT WHEEL, STEERING



N135360

1C04
(1C02)
NPC-3661

14. FRONT WHEEL, STEERING

99.01.28

(A)=YRM831VH (D)=
(B)= (E)=
(C)= (F)=

REF. NO.	LEV. 0	PART NO.	DESCRIPTION	-----Q'TY-----						I P/U A R
				(A)	(B)	(C)	(D)	(E)	(F)	
37	-	G41206120600	TIEROD	1						
38	-	G40020100010	NUT M10	1						
39	-	G47076410000	BALL, LINK	1						
40	-	G40200000062	NUT M10, R HAND SCREW	1						
41	-	G47256410010	BALL, LINK	1						
42	-	G41306120300	ARM L, STEERING	1						
43	-	G40010210830	BOLT M8XP1.0X30(8T)	1						
44	-	G40027100008	SPRING WASHER M8	1						
45	-	G40010110830	BOLT M8X30	1						
46	-	G40027100008	SPRING WASHER M8	1						
47	-	G44452041000	COLLAR, BOOT	1						
48	-	G47256540010	BOOT, RACK & PINION	1						
49	-	G47366621030	RACK, HELICAL	1						
50	-	G47366621040	BUSH	1						
51	-	G41206120500	ROD, RELAY	1						
52	-	G41206120400	GUIDE, RELAY ROD	1						
53	-	G41207020100	BOX, GEAR	1						
54	-	G40160000506	SCREW MSX6, SET	2						
55	-	G40020100008	NUT M8	2						
56	-	G40101050870	BOLT M8X70(11T)	2						
57	-	G40027100008	SPRING WASHER M8	2						
58	-	G40026100008	PLAIN WASHER M8	2						
59	-	G40010110620	BOLT M6X20(8T)	2						
60	-	G40027100006	SPRING WASHER M6	2						
61	-	G47366621040	BUSH	1						
62	-	G47256540010	BOOT, RACK & PINION	1						
63	-	G41206121000	COLLAR, RH BOOT	1						
64	-	G41306120200	ARM R, STEERING	1						
65	-	G40027100008	SPRING WASHER M8	1						
66	-	G40010100860	BOLT M8X60(8T)	1						
67	-	G40010210830	BOLT M8XP1.0X30(8T)	1						
68	-	G40027100008	SPRING WASHER M8	1						
69	-	G47076410000	BALL, LINK	1						
70	-	G40020100010	NUT M10	1						
71	-	G41206120600	TIEROD	1						
72	-	G40200000062	NUT M10, R HAND SCREW	1						
73	-	G47256410010	BALL, LINK	1						
74	-	G41206121200	STAY, ARM STEERING	1						
75	-	G40020100010	NUT M10	2						
76	-	G40027100010	SPRING WASHER M10	2						
77	-	G40430010120	BEARING, NEEDLE	1						
78	-	G47366621080	WASHER	1						
79	-	G41207020200	PINION	1						
80	-	G4040146202A	BALL BEARING 6202	1						
81	-	G40036500035	RETAINING RING R35	1						
82	-	G40036100015	RETAINING RING S15	1						
83	-	G41206160300	PIN 6X33, STRNG. SHAFT	1						
84	-	G40026100006	PLAIN WASHER M6	1						
85	-	G40031199006	PIN 6, STPRD. STRAIGHT	1						1
86	-	G41226120100	SHAFT, STEERING	1						
87	-	G41226120200	COLUMN, STEERING	1						
88	-	G41222220600	PLATE, KEY SWITCH	1						
89	-	G40010100816	BOLT M8X16	4						
90	-	G40027100008	SPRING WASHER M8	4						

** CONTINUE **

N135360

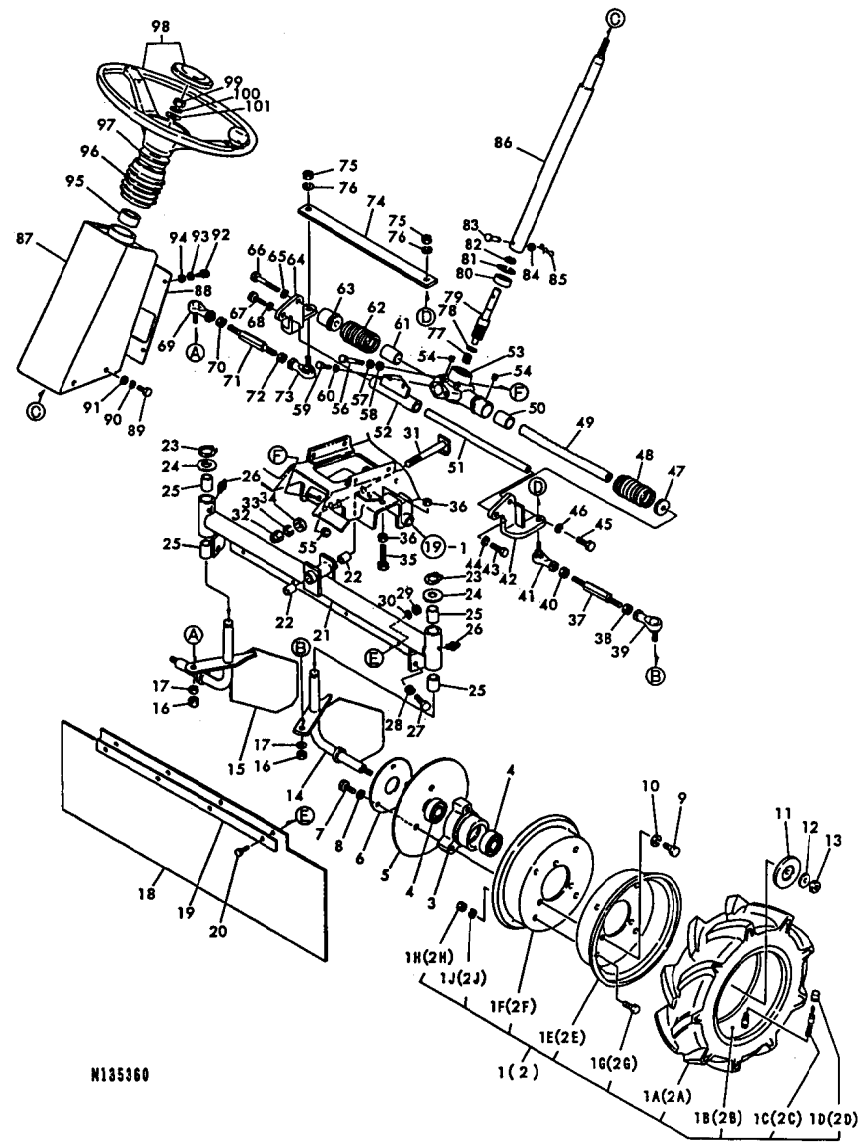
14. FRONT WHEEL, STEERING

-----+
 | 1C05 |
 | (1C02) |
 +-----+
 NPC-3661

14. FRONT WHEEL, STEERING

99.01.28

(A)=YRM831VH (D)=
 (B)= (E)=
 (C)= (F)=



N135360

REF. NO.	LEV. 0	PART NO.	DESCRIPTION	-----Q'TY----- I P/U A R					
				(A)	(B)	(C)	(D)	(E)	(F)
91	-	G40026100008	PLAIN WASHER M8	4					
92	-	G40010100612	BOLT M6X12	4					
93	-	G40027100006	SPRING WASHER M6	4					
94	-	G40026100006	PLAIN WASHER M6	4					
95	-	G41206160000	BUSH, COLUMN	1					
96	-	G41206160100	BOOT	1					
97	-	G41306160100	COLLAR, BELLOWS	1					
98	-	G41206160200	STEERING WHEEL	1					
99	-	G40020200014	NUT M14XP1.5	1					
100	-	G40027100014	SPRING WASHER M14	1					
101	-	G40026100014	PLAIN WASHER M14	1					

N135360

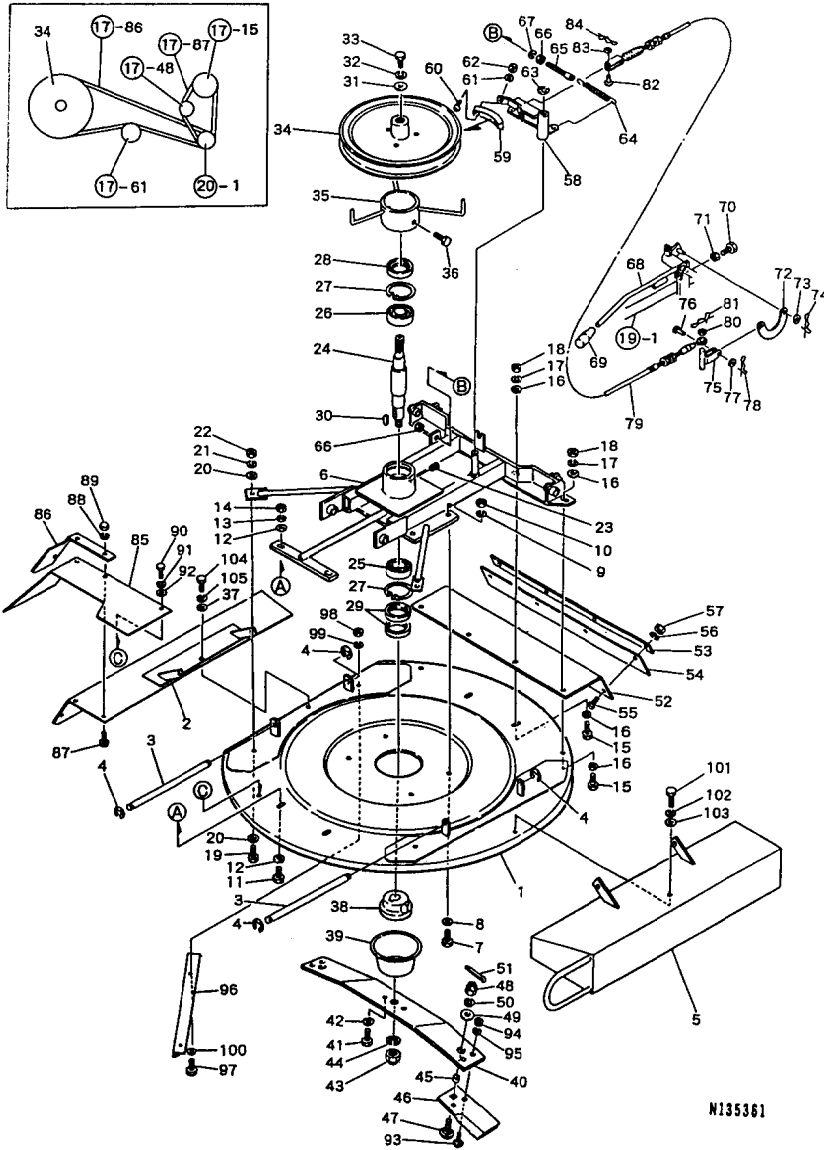
15. ROTARY

1CD6
(1C02)
NPC-3661

15. ROTARY

99.01.28

(A)=YRM831VH (D)=
(B)= (E)=
(C)= (F)=



N135361

REF. NO.	LEV. 0	PART NO.	DESCRIPTION	QTY						I	P	U	A	R	
				(A)	(B)	(C)	(D)	(E)	(F)						
1	-	G41225321100	COVER, ROTARY												
2	-	G41225351200	PL. ASSY., COVER R												
3	-	G41205320200	PIN, DISCHARGE COVER												
4	-	G40036800006	RETAINING RING E6												
5	-	G41225351300	PL. ASSY., COVER L												
6	-	G41215320300	SUPPORT, ROTARY COVER												
7	-	G40010100825	BOLT M8X25												
8	-	G40026100008	PLAIN WASHER M8												
9	-	G40027100008	SPRING WASHER M8												
10	-	G40020100008	NUT M8												
11	-	G40010100820	BOLT M8X20												
12	-	G40026100008	PLAIN WASHER M8												
13	-	G40027100008	SPRING WASHER M8												
14	-	G40020100008	NUT M8												
15	-	G40010100825	BOLT M8X25												
16	-	G40026100008	PLAIN WASHER M8												
17	-	G40027100008	SPRING WASHER M8												
18	-	G40020100008	NUT M8												
19	-	G40010100825	BOLT M8X25												
20	-	G40026100008	PLAIN WASHER M8												
21	-	G40027100008	SPRING WASHER M8												
22	-	G40020100008	NUT M8												
23	-	G40064500100	PLUG, HEX. SCKT. THREAD												
24	-	G41205320400	SHAFT, ROTARY												
25	-	G4040106007A	BALL BEARING 6007												
26	-	G4040146206A	BALL BEARING 6206												
27	-	G40036500062	RETAINING RING R62												
28	-	G40600030627	SEAL, OIL												
29	-	G406000356210	SEAL, OIL												
30	-	G40300000002	KEY 7X7X25												
31	-	G46030201000	WASHER 38X11X3.2												
32	-	G40027100010	SPRING WASHER M10												
33	-	G40010101025	BOLT M10X25												
34	-	G41225321500	PULLEY, ROTARY												
35	-	G41225321600	STOPPER, ROTARY BELT												
36	-	G40010100816	BOLT M8X16												
37	-	G40026100008	PLAIN WASHER M8												
38	-	G41225320900	BOSS, REAPING EDGE												
39	-	G47002320010	PLATE, TWINE PROTECT.												
40	-	G41225361100	ARM, REAPING EDGE MTG												
41	-	G40010111025	BOLT M10X25												
42	-	G40027100010	SPRING WASHER M10												
43	-	G40020210016	NUT M16XP1.5												
44	-	G40027100016	SPRING WASHER M16												
45	-	G47392040000	COLLAR, FR. EDGE FLCRM												
46	-	G41225362000	EDGE CE, FREE READING												
47	-	G41305360300	BOLT, FREE EDGE MTG.												
48	-	G41305360500	NUT M12, CASTLE												
49	-	G46002202000	WASHER 34X13X3.2												
50	-	G40027100012	SPRING WASHER M12												
51	-	G4030103225S	COTTOR PIN 3.2X25												
52	-	G41225320200	STAY, REAR RUBR. DRAPE												
53	-	G41205320900	PLATE, REAR RBR. DRAPE												
54	-	G41225360300	DRAPE, REAR RUBBER												

** CONTINUE **

N135361

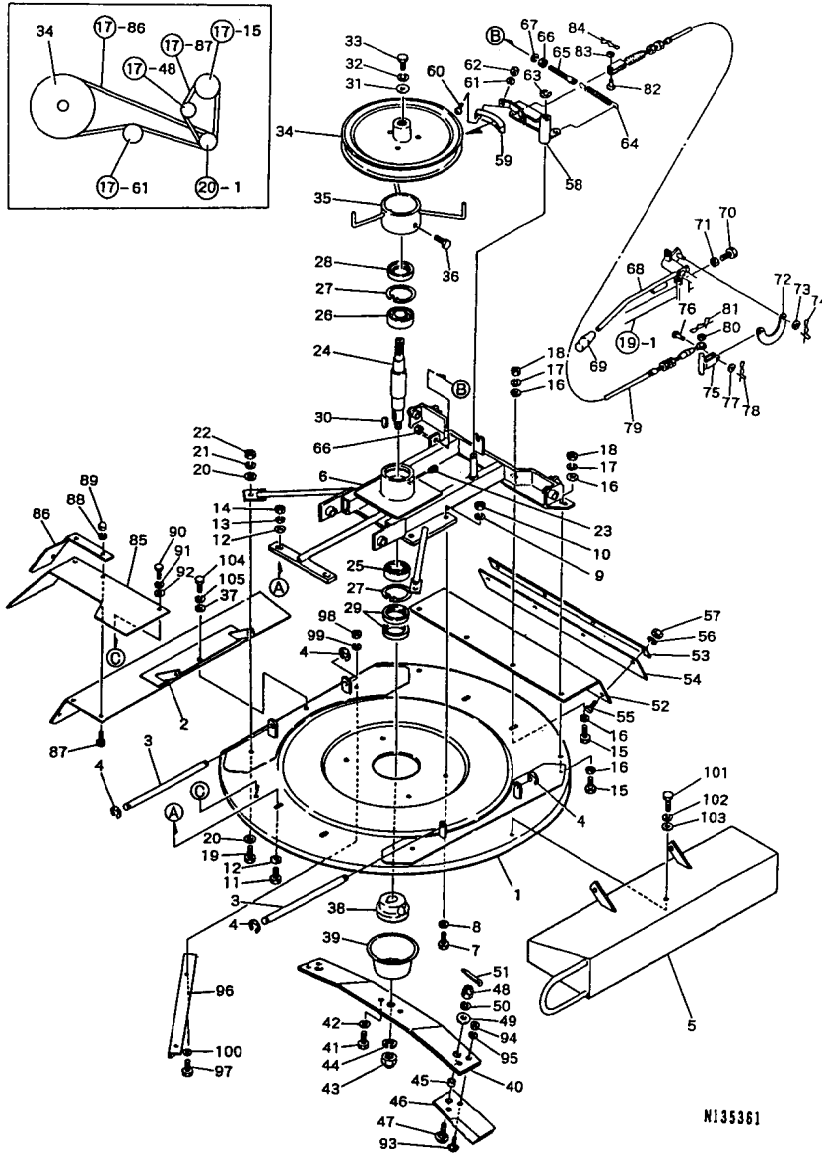
15. ROTARY

1C07
1C02
NPC-3661

15. ROTARY

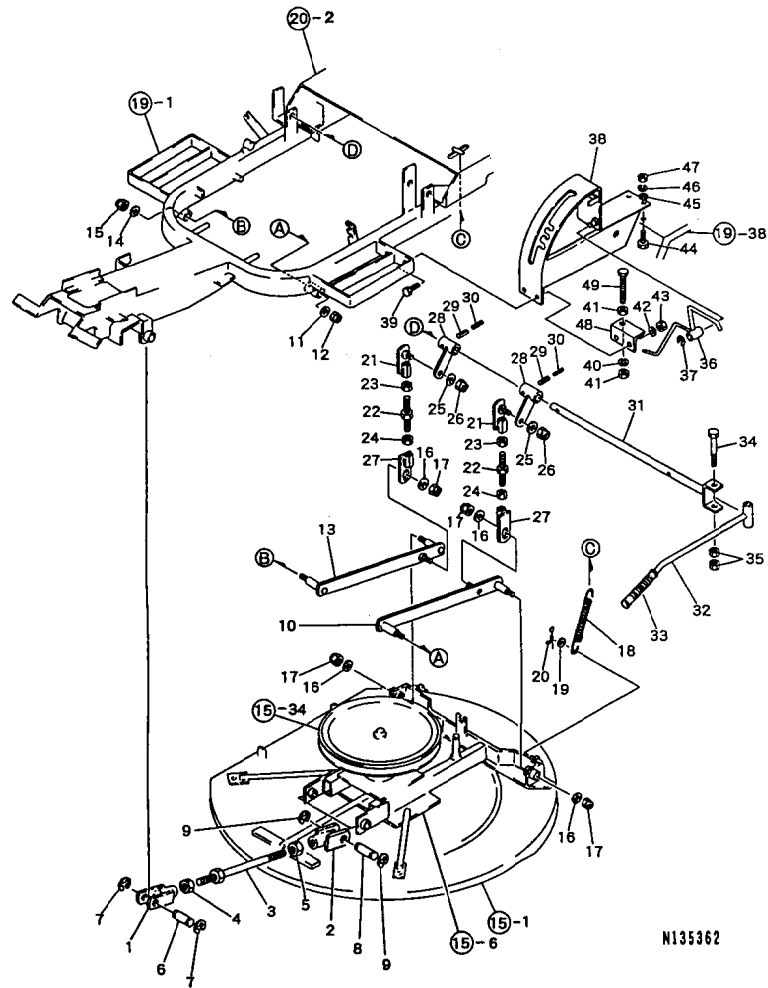
99.01.28

(A)=YRM831VH (D)=
(B)= (E)=
(C)= (F)=



REF. NO.	LEV. 0	PART NO.	DESCRIPTION	Q'TY						I	P	U	A	R
				(A)	(B)	(C)	(D)	(E)	(F)					
55	.	G40010100820	BOLT M8X20	4										
56	.	G40027100008	SPRING WASHER M8	4										
57	.	G40020100008	NUT M8	4										
58	.	G41225321700	ARM, ROTARY BRAKE	1										
59	.	G41205360100	SHOE, BRAKE	1										
60	.	G40015100315	SCREW M3X15, CRH. PAN	2										
61	.	G40027100003	SPRING WASHER M3	2										
62	.	G40020100003	NUT M3	2										
63	.	G40036800012	RETAINING RING E12	1										
64	.	G47252110000	SPRING	1										
65	.	G47252221000	PLATE	1										
66	.	G40020100008	NUT M8	2										
67	.	G40027100008	SPRING WASHER M8	1										
68	.	G41225320600	LEVER, ROTARY	1										
69	.	G46066030020	GRIP 9.5	1										
70	.	G40010100820	BOLT M8X20	1										
71	.	G40020100008	NUT M8	1										
72	.	G42737220010	ROD	1										
73	.	G40026100006	PLAIN WASHER M6	1										
74	.	G40031199006	PIN 6, STPRD. STRAIGHT	1								1		
75	.	G41205321400	ROD, ROTARY WIRE	1										
76	.	G46066080000	PIN 6X19. FLAT HEAD	1										
77	.	G40026100006	PLAIN WASHER M6	1										
78	.	G40031199006	PIN 6, STPRD. STRAIGHT	1								1		
79	.	G41205360300	WIRE, BRAKE	1									1	
80	.	G40026100006	PLAIN WASHER M6	1										
81	.	G40031199006	PIN 6, STPRD. STRAIGHT	1									1	
82	.	G46066080000	PIN 6X19. FLAT HEAD	1										
83	.	G40026100006	PLAIN WASHER M6	1										
84	.	G40031199006	PIN 6, STPRD. STRAIGHT	1									1	
85	.	G41225362100	RUBBER, ROTARY COVER	1										
86	.	G41225321400	PLATE, RUBR. RETAINER	1										
87	.	G40010100820	BOLT M8X20	3										
88	.	G40027100008	SPRING WASHER M8	3										
89	.	G40024500008	NUT M8, CAP	3										
90	.	G40010100820	BOLT M8X20	1										
91	.	G40027100008	SPRING WASHER M8	1										
92	.	G40026100008	PLAIN WASHER M8	1										
93	.	G47396070000	BOLT, CUP SQUARE NECK	4									1	
94	.	G40020100010	NUT M10	4										
95	.	G40027100010	SPRING WASHER M10	4										
96	.	G41225320500	GUIDE	1										
97	.	G40010100816	BOLT M8X16	1										
98	.	G40020100008	NUT M8	1										
99	.	G40027100008	SPRING WASHER M8	1										
100	.	G40026100008	PLAIN WASHER M8	1										
101	.	G40010100820	BOLT M8X20	1										
102	.	G40027100008	SPRING WASHER M8	1										
103	.	G40026100008	PLAIN WASHER M8	1										
104	.	G40010100820	BOLT M8X20	1										
105	.	G40027100008	SPRING WASHER M8	1										

16. REAP HEIGHT ADJUSTMENT



+-----+
| 1C08 |
| (1C02) |
+-----+
NPC-3661

16. REAP HEIGHT ADJUSTMENT

99.01.28

(A)=YRM831VH (D)=
(B)= (E)=
(C)= (F)=

REF. NO.	LEV. 0	PART NO.	DESCRIPTION	Q'TY						I P/U A R
				(A)	(B)	(C)	(D)	(E)	(F)	
1	.	G41216220100	CLEVIS,R HAND SCREW	2						
2	.	G41216220200	CLEVIS,L HAND SCREW	2						
3	.	G41216220300	ROD,FRONT LINK	2						
4	.	G40020200016	NUT M16XP1.5	2						
5	.	G40020109110	NUT M16XP1.5,L HAND	2						
6	.	G41216220400	PIN,LINK	2						
7	.	G40036800012	RETAINING RING E12	4						
8	.	G41216220400	PIN,LINK	2						
9	.	G40036800012	RETAINING RING E12	4						
10	.	G41206220200	LINK,REAR	1						
11	.	G46032201000	WASHER 30X11X2.3	1						
12	.	G40022400010	U-NUT M10	1						
13	.	G41206220200	LINK,REAR	1						
14	.	G46032201000	WASHER 30X11X2.3	1						
15	.	G40022400010	U-NUT M10	1						
16	.	G46032201000	WASHER 30X11X2.3	4						
17	.	G40022400010	U-NUT M10	4						
18	.	G41305322400	SPRING,ROTARY	2						
19	.	G40026100010	PLAIN WASHER M10	2						
20	.	G40031199010	STOPPER PIN 10	2						
21	.	G41216220600	LINK,ROTRY U/D UPPER	2						
22	.	G41216220700	TURNBUCKLE,ROTRY.U/D	2						
23	.	G40020100012	NUT M12	2						
24	.	G4200000012L	NUT M12,L HAND SCREW	2						
25	.	G46032201000	WASHER 30X11X2.3	2						
26	.	G40022400010	U-NUT M10	2						
27	.	G41216220800	LINK,ROTRY.U/D LOWER	2						
28	.	G41216220900	ARM,ROTARY UP/DOWN	2						
29	.	G40030300625	SPRING PIN 6X25	2						
30	.	G40030303525	SPRING PIN 3.5X25	2						
31	.	G41226220200	SHAFT,ROTARY UP/DOWN	1						
32	.	G41206220700	LEVER,ROTARY UP/DOWN	1						
33	.	G41206260000	GRIP	1						
34	.	G40010101090	BOLT M10X90	1						
35	.	G40020100010	NUT M10	2						
36	.	G41226220300	ARM,ROTARY CLUTCH	1						
37	.	G40036800010	RETAINING RING E10	1						
38	.	G41226220100	GUIDE,ROTARY UP/DOWN	1						
39	.	G40010100820	BOLT M8X20	2						
40	.	G40027100010	SPRING WASHER M10	1						
41	.	G40020100010	NUT M10	2						
42	.	G40027100008	SPRING WASHER M8	2						
43	.	G40020100008	NUT M8	2						
44	.	G40010100820	BOLT M8X20	2						
45	.	G40026100008	PLAIN WASHER M8	2						
46	.	G40027100008	SPRING WASHER M8	2						
47	.	G40020100008	NUT M8	2						
48	.	G41316221400	STOPPER,REAP.HEIGHT	1						
49	.	G40100000088	BOLT M10X100	1						

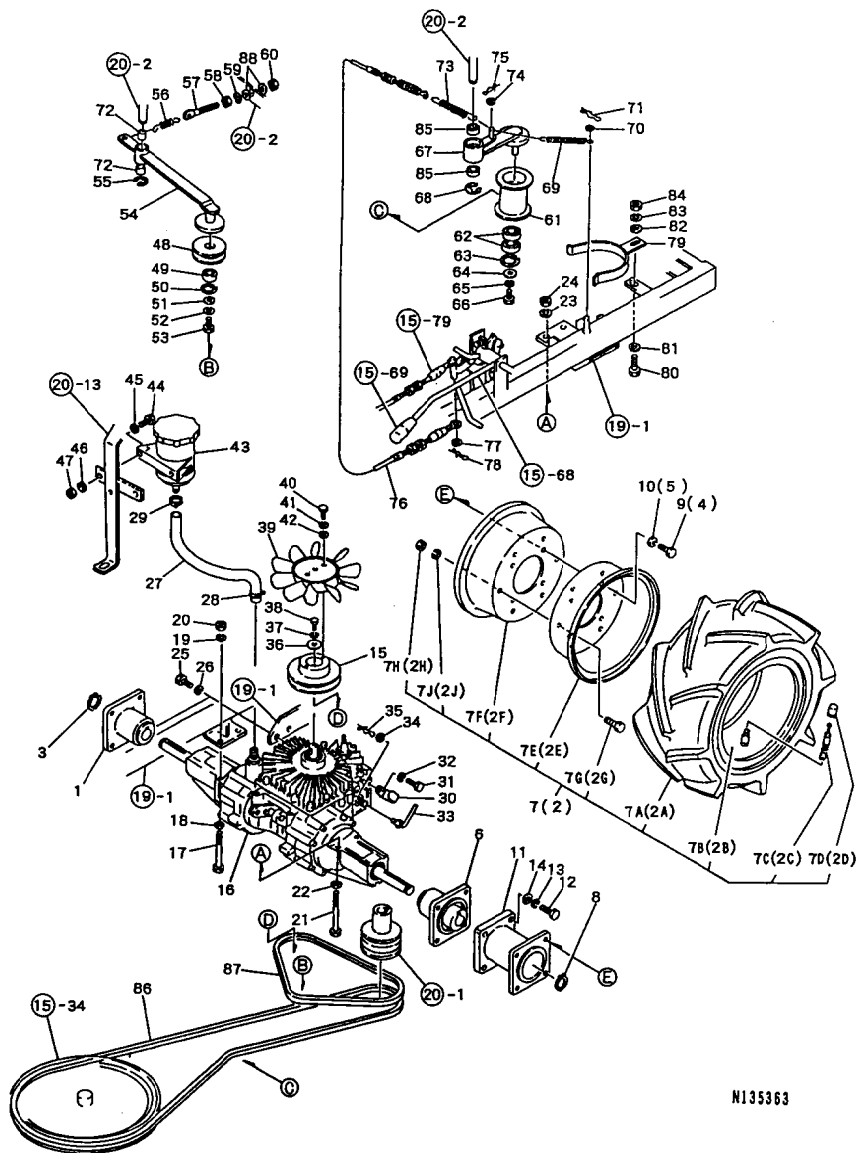
17. REAR WHEEL, HST, TRANSMISSION

1C09
(1C02)
NPC-3661

17. REAR WHEEL, HST, TRANSMISSION

99.01.28

(A)=YRM831VH (D)=
(B)= (E)=
(C)= (F)=

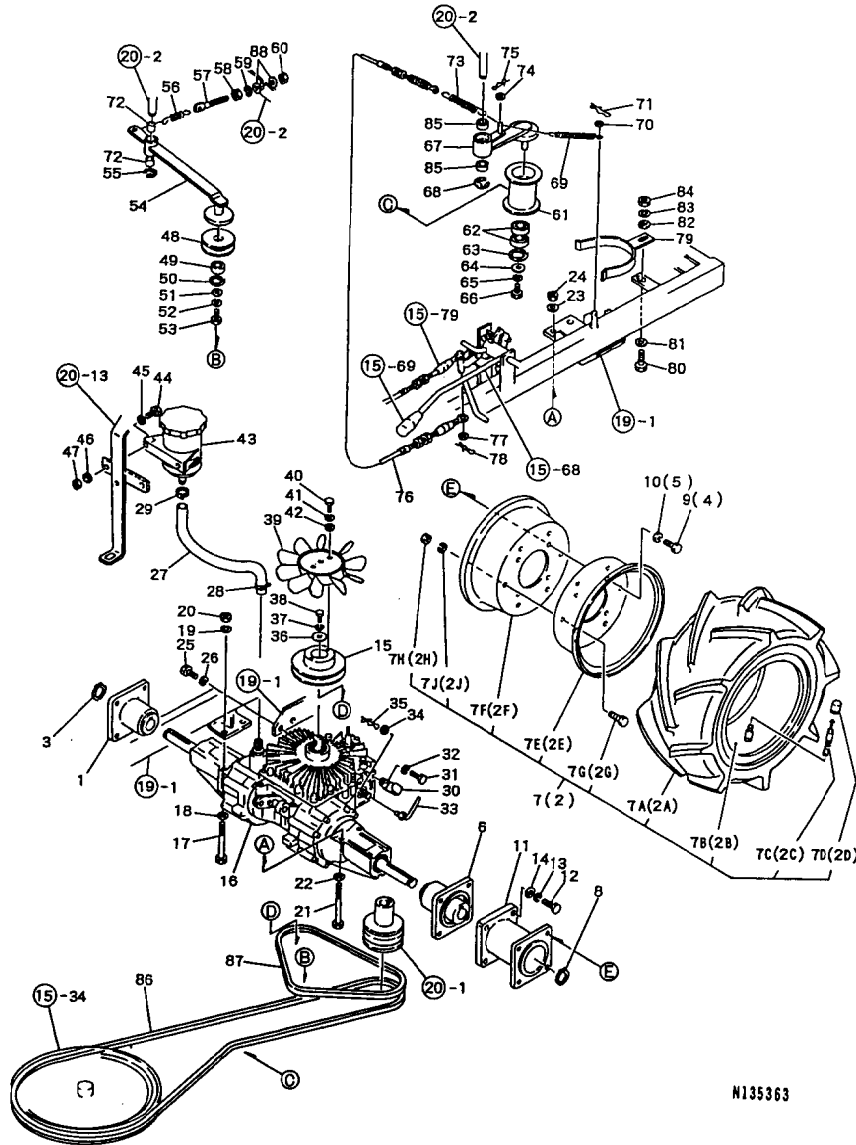


REF. NO.	LEV. 0	PART NO.	DESCRIPTION	Q'TY						I P U A R
				(A)	(B)	(C)	(D)	(E)	(F)	
1	.	G41200220500	HUB, REAR WHEEL	1						
2	.	G41200260300	TIRE R ASSY.	1						
2A	..	G41200260301	TIRE	1						
2B	..	G41200260302	TUBE	1						
2C	..	G41200260303	VALVE	1						
2D	..	G41200260304	CAP, VALVE	1						
2E	..	G41200260305	WHEEL A	1						
2F	..	G41200260306	WHEEL B	1						
2G	..	G40010100816	BOLT M8X16	6						
2H	..	G40020100008	NUT M8	6						
2J	..	G40027100008	SPRING WASHER M8	6						
3	.	G41200260700	RING, STOP	1						
4	.	G40010101020	BOLT M10X20	4						
5	.	G40027100010	SPRING WASHER M10	4						
6	.	G41200220500	HUB, REAR WHEEL	1						
7	.	G41200260400	TIRE L ASSY.	1						
7A	..	G41200260301	TIRE	1						
7B	..	G41200260302	TUBE	1						
7C	..	G41200260303	VALVE	1						
7D	..	G41200260304	CAP, VALVE	1						
7E	..	G41200260305	WHEEL A	1						
7F	..	G41200260306	WHEEL B	1						
7G	..	G40010100816	BOLT M8X16	6						
7H	..	G40020100008	NUT M8	6						
7J	..	G40027100008	SPRING WASHER M8	6						
8	.	G41200260700	RING, STOP	1						
9	.	G40010101020	BOLT M10X20	4						
10	.	G40027100010	SPRING WASHER M10	4						
11	.	G41220220200	HUB, EXTENSION	1						
12	.	G40010111030	BOLT M10X30	4						
13	.	G40027100010	SPRING WASHER M10	4						
14	.	G40026100010	PLAIN WASHER M10	4						
15	.	G41203020000	PULLEY, HST	1						
16	.	G41203060100	AXLE, HYDRAULIC TRANS	1						
17	.	G40010101080	BOLT M10X80	2						
18	.	G40026100010	PLAIN WASHER M10	2						
19	.	G40027100010	SPRING WASHER M10	2						
20	.	G40020100010	NUT M10	2						
21	.	G40010101080	BOLT M10X80	2						
22	.	G40026100010	PLAIN WASHER M10	2						
23	.	G40027100010	SPRING WASHER M10	2						
24	.	G40020100010	NUT M10	2						
25	.	G40151516020	BOLT	2						
26	.	G40027151618	SPRING WASHER	2						
27	.	G41203060000	HOSE 23X16.2X280	1						
28	.	G40500003002	BAND 25, TYPE B	1						
29	.	G40500003002	BAND 25, TYPE B	1						
30	.	G42399111040	CLAMP M8	1						
31	.	G40150516010	BOLT	1						
32	.	G40027151618	SPRING WASHER	1						
33	.	G41203020200	LEVER, DAMP VALVE	1						
34	.	G40026100006	PLAIN WASHER M6	1						
35	.	G40031199006	PIN 6, STPRD. STRAIGHT	1						
36	.	G46032201010	WASHER 30X7X3.2	1						

** CONTINUE **

N135363

17. REAR WHEEL, HST, TRANSMISSION



N135363

1C10
1C02
NPC-3661

17. REAR WHEEL, HST, TRANSMISSION

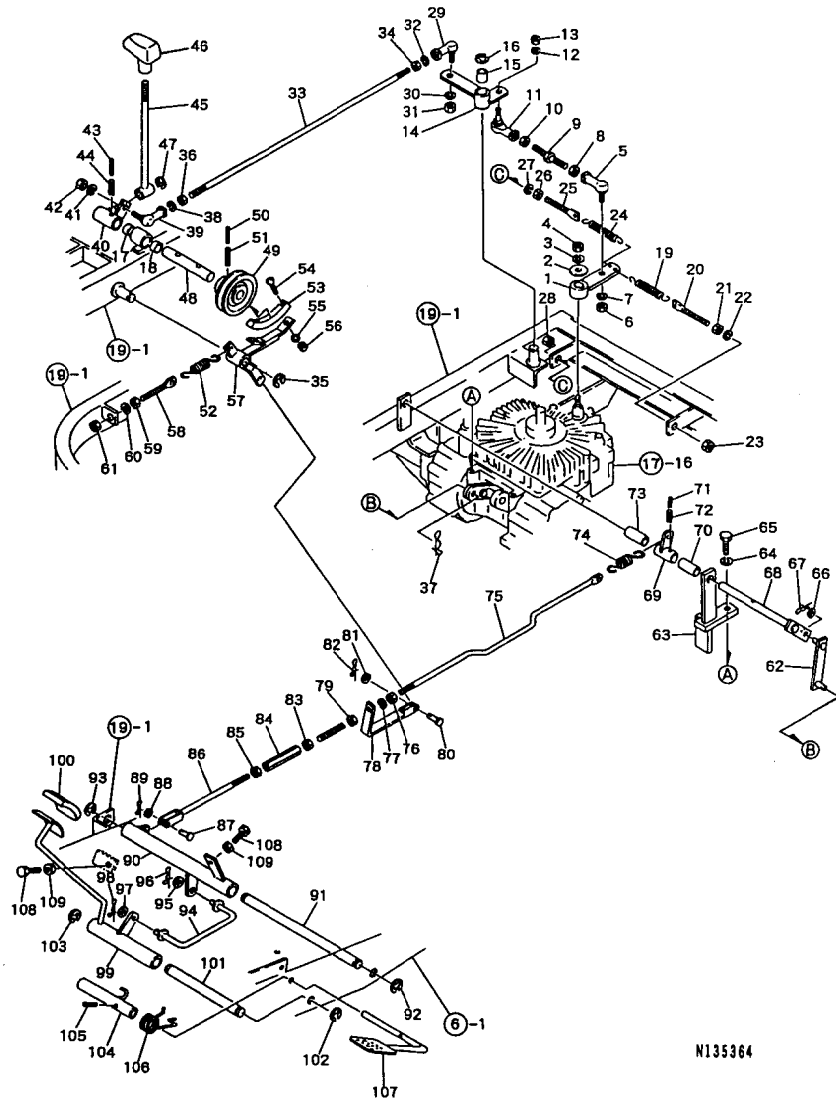
99.01.28

(A)=YRM831VH (D)=
(B)= (E)=
(C)= (F)=

REF. NO.	LEV. 0	PART NO.	DESCRIPTION	-----Q'TY-----						I	P	U	A	R
				(A)	(B)	(C)	(D)	(E)	(F)					
37	.	G40027114020	SPRING WASHER	1										
38	.	G40151140015	BOLT	1										
39	.	G41203020100	FAN, HST	1										
40	.	G40010100616	BOLT M6X16	2										
41	.	G40027100006	SPRING WASHER M6	2										
42	.	G40026100006	PLAIN WASHER M6	2										
43	.	G4106011	TANK, EXPANSION	1										
44	.	G40010100616	BOLT M6X16	2										
45	.	G40026100006	PLAIN WASHER M6	2										
46	.	G40027100006	SPRING WASHER M6	2										
47	.	G40020100006	NUT M6	2										
48	.	G41202120400	PULLEY, HST TENSION	1										
49	.	G4040146201A	BALL BEARING 6201	1										
50	.	G40036500032	RETAINING RING R32	1										
51	.	G46066070000	WASHER 16X7X1.6	1										
52	.	G40027100006	SPRING WASHER M6	1										
53	.	G40010100616	BOLT M6X16	1										
54	.	G41222121200	ARM, HST TENSION	1										
55	.	G40036800012	RETAINING RING E12	1										
56	.	G46062105000	SPRING	1										
57	.	G47252221000	PLATE	1										
58	.	G40020100008	NUT M8	1										
59	.	G40027100008	SPRING WASHER M8	1										
60	.	G40020100008	NUT M8	1										
61	.	G41202120200	PULLEY, ROTARY TENS.	1										
62	.	G4040146201A	BALL BEARING 6201	2										
63	.	G40036500032	RETAINING RING R32	1										
64	.	G4030-10008	WASHER M8	1										
65	.	G40027100008	SPRING WASHER M8	1										
66	.	G40010100816	BOLT M8X16	1										
67	.	G41222121000	ARM, ROTARY TENSION	1										
68	.	G40036800015	RETAINING RING E15	1										
69	.	G47862450020	SPRING	1										
70	.	G40026100008	PLAIN WASHER M8	1										
71	.	G40031199008	PIN 8, STPRD. STRAIGHT	1										
72	.	G400MB1615DU	BUSH, DU	2										
73	.	G44642100010	SPRING	1										
74	.	G40026100008	PLAIN WASHER M8	1										
75	.	G40031199008	PIN 8, STPRD. STRAIGHT	1										
76	.	G41205360200	WIRE, ROTARY	1										
77	.	G40026100006	PLAIN WASHER M6	1										
78	.	G40031199006	PIN 6, STPRD. STRAIGHT	1									1	
79	.	G41202220600	STOPPER, BELT ENGINE	1										
80	.	G40100000016	BOLT M8X30	1										
81	.	G40026100008	PLAIN WASHER M8	1										
82	.	G40026100008	PLAIN WASHER M8	1										
83	.	G40027100008	SPRING WASHER M8	1										
84	.	G40020100008	NUT M8	1										
85	.	G4040146004A	BALL BEARING 6004	2										
86	.	G40080320076	V-BELT SB76, BLUE	1									1	
87	.	G40080320027	V-BELT	1										
88	.	G40026100008	PLAIN WASHER M8	2										

N135363

18. HST CONTROL



N135364

1C11
1C02
NPC-3661

18. HST CONTROL

99.01.28

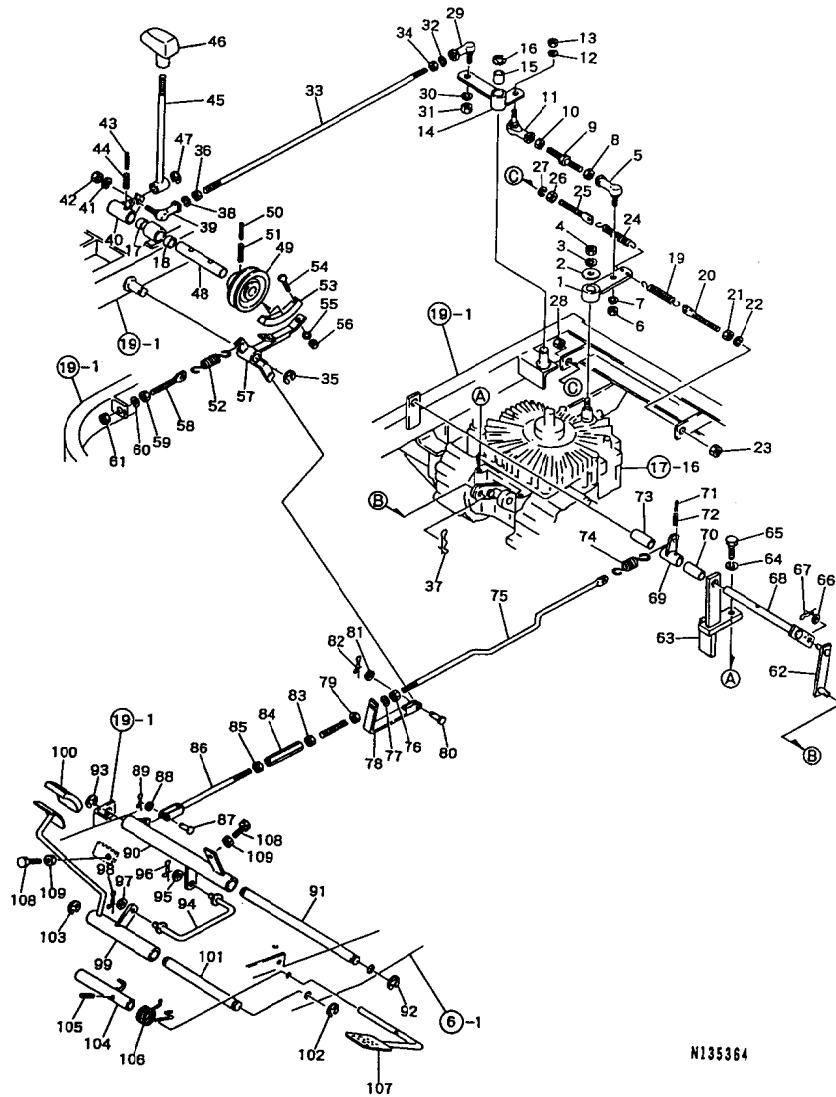
(A)=YRM831VH (D)=
(B)= (E)=
(C)= (F)=

REF. NO.	LEV. 0	PART NO.	DESCRIPTION	Q'TY						I	P/U	A	R
				(A)	(B)	(C)	(D)	(E)	(F)				
1	.	G41316020100	ARM,HST	1									
2	.	G47082200000	WASHER 30X11X3.2	1									
3	.	G40027138016	SPRING WASHER	1									
4	.	G40020138016	NUT	1									
5	.	G47876410010	BALL,LINK	1									
6	.	G40020100008	NUT M8	1									
7	.	G40027100008	SPRING WASHER M8	1									
8	.	G40200000021	NUT M8,L HAND SCREW	1									
9	.	G41206020100	ROD,HST	1									
10	.	G40020100008	NUT M8	1									
11	.	G47876410000	BALL,LINK	1									
12	.	G40027100008	SPRING WASHER M8	1									
13	.	G40020100008	NUT M8	1									
14	.	G41206020200	LINK,HST	1									
15	.	G400MB1420DU	BUSH,DU	1									
16	.	G40036800012	RETAINING RING E12	1									
17	.	G400MB1610DU	BUSH,DU	1									
18	.	G400MB1610DU	BUSH,DU	1									
19	.	G41216021000	SPRING,HST	1									
20	.	G47252221000	PLATE	1									
21	.	G40020100008	NUT M8	1									
22	.	G40027100008	SPRING WASHER M8	1									
23	.	G40020100008	NUT M8	1									
24	.	G41216021000	SPRING,HST	1									
25	.	G47252221000	PLATE	1									
26	.	G40020100008	NUT M8	1									
27	.	G40027100008	SPRING WASHER M8	1									
28	.	G40020100008	NUT M8	1									
29	.	G47876410000	BALL,LINK	1									
30	.	G40027100008	SPRING WASHER M8	1									
31	.	G40020100008	NUT M8	1									
32	.	G40027100008	SPRING WASHER M8	1									
33	.	G41216020100	ROD,LEVER HST	1									
34	.	G40200000021	NUT M8,L HAND SCREW	1									
35	.	G40036800012	RETAINING RING E12	1									
36	.	G40020100008	NUT M8	1									
37	.	G40031199006	PIN 6,STPRD.STRAIGHT	1							1		
38	.	G40027100008	SPRING WASHER M8	1									
39	.	G47876410000	BALL,LINK	1									
40	.	G41206020400	BOSS,LEVER HST	1									
41	.	G40027100008	SPRING WASHER M8	1									
42	.	G40020100008	NUT M8	1									
43	.	G40030300325	SPRING PIN 3X25	1									
44	.	G40030300525	SPRING PIN 5X25	1									
45	.	G41206020500	LEVER,HST	1									
46	.	G41206060000	GRIP	1									
47	.	G40036800010	RETAINING RING E10	1									
48	.	G41206020800	SHAFT,FRICTION	1									
49	.	G41206020900	PULLEY,FRICTION	1									
50	.	G40030300332	SPRING PIN 3X32	1									
51	.	G40030300532	SPRING PIN 5X32	1									
52	.	G44012100022	SPRING	1									
53	.	G41205360100	SHOE,BRAKE	1									
54	.	G40015100315	SCREW M3X15,CRH.PAN	2									

** CONTINUE **

N135364

18. HST CONTROL



N135364

1C12
(1C02)
NPC-3661

18. HST CONTROL

99.01.28

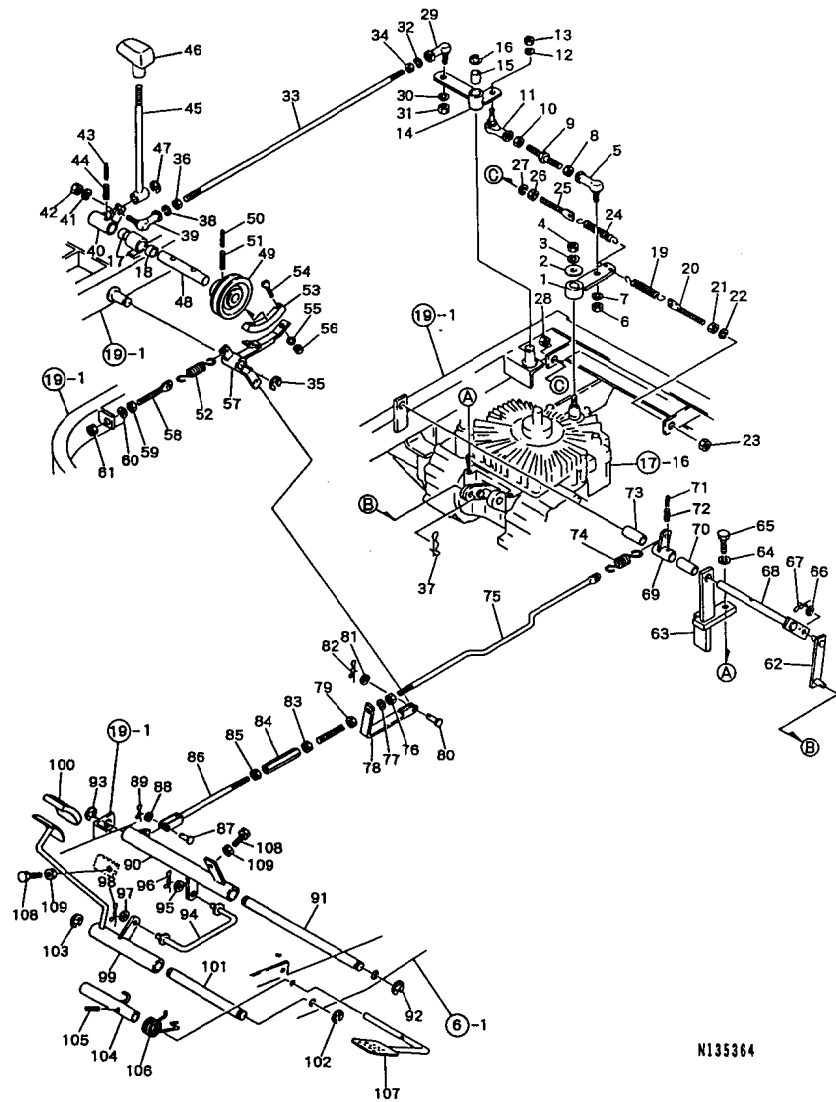
(A)=YRM831VH (D)=
(B)= (E)=
(C)= (F)=

REF. NO.	LEV. 0	PART NO.	DESCRIPTION	Q'TY						I	P	U	A	R
				(A)	(B)	(C)	(D)	(E)	(F)					
55	.	G40027100003	SPRING WASHER M3	2										
56	.	G40020100003	NUT M3	2										
57	.	G41206021100	ARM, FRICTION	1										
58	.	G47252221000	PLATE	1										
59	.	G40020100008	NUT M8	1										
60	.	G40027100008	SPRING WASHER M8	1										
61	.	G40020100008	NUT M8	1										
62	.	G41316320200	ROD, BRAKE HST	1										
63	.	G41316320100	STAY, BRAKE HST	1										
64	.	G40027151618	SPRING WASHER	1										
65	.	G40150516025	BOLT	1										
66	.	G40026100006	PLAIN WASHER M6	1										
67	.	G40031199006	PIN 6, STPRD. STRAIGHT	1								1		
68	.	G41206320200	SHAFT, BRAKE HST	1										
69	.	G41206321300	ARM, PARKING BRAKE	1										
70	.	G41206320300	COLLAR, BRAKE HST	1										
71	.	G40030300320	SPRING PIN 3X20	1										
72	.	G40030300520	SPRING PIN 5X20	1										
73	.	G41206320300	COLLAR, BRAKE HST	1										
74	.	G41225320700	SPRING, DISCHARGE	1										
75	.	G41206320400	ROD, BRAKE R HND. SCRW	1										
76	.	G40020100008	NUT M8	1										
77	.	G40027100008	SPRING WASHER M8	1										
78	.	G41206021000	ROD, FRICTION	1										
79	.	G40020100008	NUT M8	1										
80	.	G46066080000	PIN 6X19. FLAT HEAD	1										
81	.	G40026100006	PLAIN WASHER M6	1										
82	.	G40031199006	PIN 6, STPRD. STRAIGHT	1								1		
83	.	G40020100008	NUT M8	1										
84	.	G46066530100	TURN BUKLE M8	1										
85	.	G40200000021	NUT M8, L HAND SCREW	1										
86	.	G41206320500	ROD, BRAKE L HND. SCRW	1										
87	.	G46066080000	PIN 6X19. FLAT HEAD	1										
88	.	G40026100006	PLAIN WASHER M6	1										
89	.	G40031199006	PIN 6, STPRD. STRAIGHT	1								1		
90	.	G41226320300	LINK, BRAKE	1										
91	.	G41206320700	SHAFT, BRAKE LING	1										
92	.	G40036800012	RETAINING RING E12	1										
93	.	G40036800012	RETAINING RING E12	1										
94	.	G41206320800	ROD, BRAKE PEDAL SIDE	1										
95	.	G40026100010	PLAIN WASHER M10	1										
96	.	G40031199010	STOPPER PIN 10	1										
97	.	G40026100010	PLAIN WASHER M10	1										
98	.	G40031199010	STOPPER PIN 10	1										
99	.	G41206320900	PEDAL, BRAKE	1										
100	.	G41206360000	RUBBER, PEDAL	1										
101	.	G41206321000	SHAFT, PEDAL	1										
102	.	G40036800012	RETAINING RING E12	1										
103	.	G40036800012	RETAINING RING E12	1										
104	.	G41206321100	STOPPER, PARK. BRAKE	1										
105	.	G40030300420	SPRING PIN 4X20	1										
106	.	G46062104040	SPRING	1										
107	.	G41206321400	LEVER, PARKING BRAKE	1										
108	.	G40100000016	BOLT M8X30	2										

** CONTINUE **

N135364

18. HST CONTROL



N135364

-----+
 | 1C13 |
 | (1C02) |
 +-----+
 NPC-3661

18. HST CONTROL

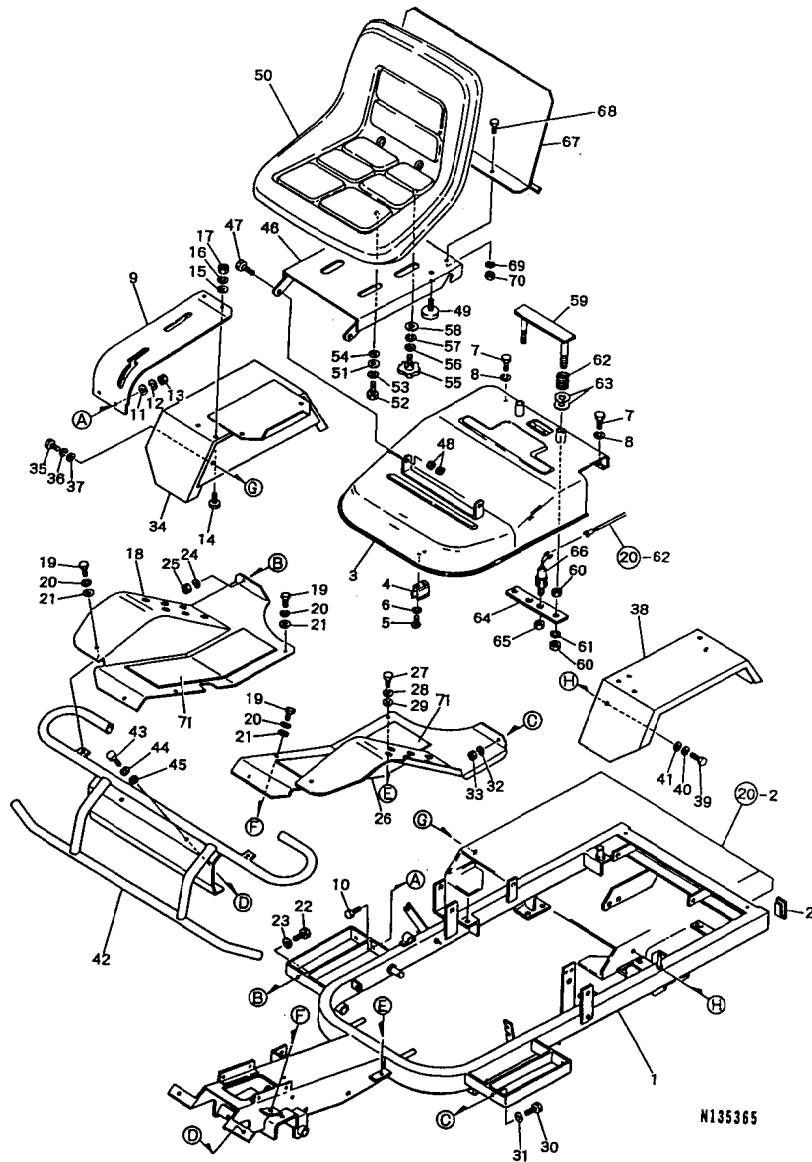
99.01.28

(A)=YRM831VH (D)=
 (B)= (E)=
 (C)= (F)=

REF. NO.	LEV. 0	PART NO.	DESCRIPTION	-----Q'ITY-----						I	P	U	A	R
				(A)	(B)	(C)	(D)	(E)	(F)					
109	.	640020100008	NUT M8	2										

N135364

19. FRAME, COVER, SEAT



1C14
(1C02)
NPC-3661

19. FRAME, COVER, SEAT

99.01.28

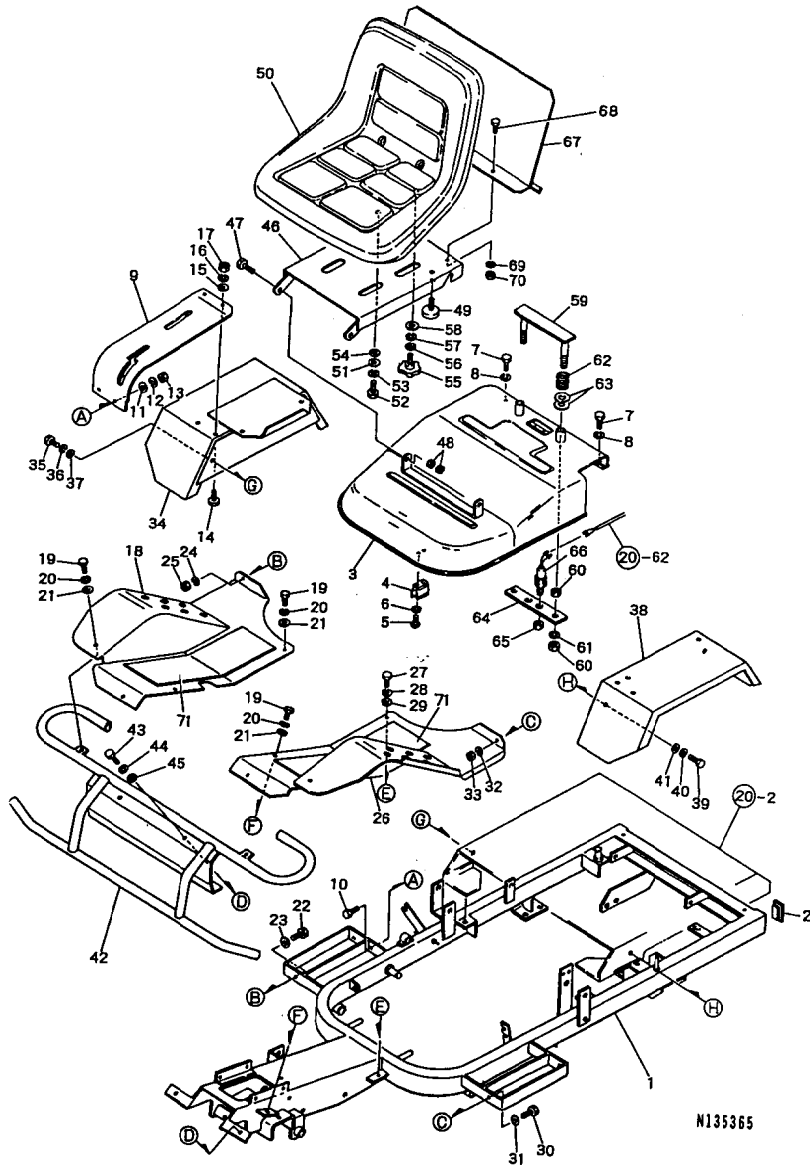
(A)=YRM831VH (D)=
(B)= (E)=
(C)= (F)=

REF. NO.	LEV. 0	PART NO.	DESCRIPTION	Q'TY						I P/U A R
				(A)	(B)	(C)	(D)	(E)	(F)	
1	-	G41221050400	PL.ASSY.,FRAME	1						
2	-	G47396207000	CAP 50X30,RUBBER	2						
3	-	G41201150000	PL.ASSY.,COVER	1						
4	-	G44016111000	FIXTURE,SPLINKL.PIPE	2						
5	-	G40015100610	SCREW M6X10,CRH.PAN	4						
6	-	G40027100006	SPRING WASHER M6	4						
7	-	G40010100816	BOLT M8X16	2						
8	-	G40027100008	SPRING WASHER M8	2						
9	-	G41221150100	PL.ASSY.,COVER RH	1						
10	-	G40010100820	BOLT M8X20	2						
11	-	G40026100008	PLAIN WASHER M8	2						
12	-	G40027100008	SPRING WASHER M8	2						
13	-	G40020100008	NUT M8	2						
14	-	G40010100816	BOLT M8X16	2						
15	-	G40026100008	PLAIN WASHER M8	2						
16	-	G40027100008	SPRING WASHER M8	2						
17	-	G40020100008	NUT M8	2						
18	-	G41221120200	FENDER R,FRONT	1						
19	-	G40010100816	BOLT M8X16	3						
20	-	G40027100008	SPRING WASHER M8	3						
21	-	G40026100008	PLAIN WASHER M8	3						
22	-	G40010100820	BOLT M8X20	1						
23	-	G40026100008	PLAIN WASHER M8	1						
24	-	G40027100008	SPRING WASHER M8	1						
25	-	G40020100008	NUT M8	1						
26	-	G41221120300	FENDER L,FRONT	1						
27	-	G40010100816	BOLT M8X16	3						
28	-	G40027100008	SPRING WASHER M8	3						
29	-	G40026100008	PLAIN WASHER M8	3						
30	-	G40010100820	BOLT M8X20	1						
31	-	G40026100008	PLAIN WASHER M8	1						
32	-	G40027100008	SPRING WASHER M8	1						
33	-	G40020100008	NUT M8	1						
34	-	G41221121100	FENDER R,REAR	1						
35	-	G40010100816	BOLT M8X16	2						
36	-	G40027100008	SPRING WASHER M8	2						
37	-	G40026100008	PLAIN WASHER M8	2						
38	-	G41221121200	FENDER L,REAR	1						
39	-	G40010100816	BOLT M8X16	2						
40	-	G40027100008	SPRING WASHER M8	2						
41	-	G40026100008	PLAIN WASHER M8	2						
42	-	G41221121000	BUMPER,FRONT	1						
43	-	G40010100820	BOLT M8X20	2						
44	-	G40027100008	SPRING WASHER M8	2						
45	-	G40026100008	PLAIN WASHER M8	2						
46	-	G41221820100	STAY,SEAT	1						
47	-	G40010101030	BOLT M10X30	2						
48	-	G40020100010	NUT M10	4						
49	-	G46376512000	CUSHION RUBBER	2						
50	-	G40701860600	SEAT	1						
51	-	G46002201000	WASHER 30X9X3.2	3						
52	-	G40010100816	BOLT M8X16	3						
53	-	G40027100008	SPRING WASHER M8	3						
54	-	G46102040000	WASHER 22X9X3.2	3						

** CONTINUE **

N135365

19. FRAME, COVER, SEAT



1C15
1C02
NPC-3661

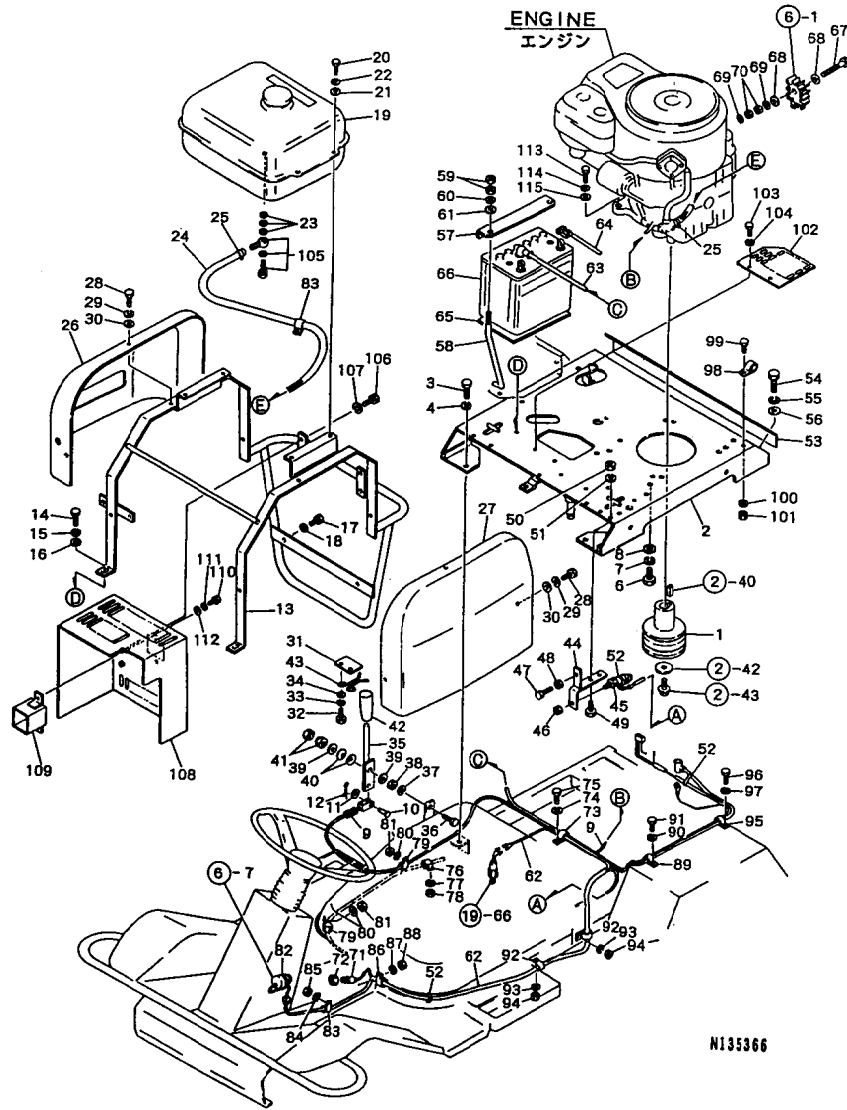
19. FRAME, COVER, SEAT

99.01.28

(A)=YRM831VH (D)=
(B)= (E)=
(C)= (F)=

REF. NO.	LEV. 0	PART NO.	DESCRIPTION	Q'TY-----						I P/U A R
				(A)	(B)	(C)	(D)	(E)	(F)	
55	.	G40905260000	KNOB BOLT M8X20	1						
56	.	G40026100008	PLAIN WASHER M8	1						
57	.	G40027100008	SPRING WASHER M8	1						
58	-	G46002201000	WASHER 30X9X3.2	1						
59	-	G41206420000	BRACKET	1						
60	-	G40020100008	NUT M8	4						
61	-	G40027100008	SPRING WASHER M8	2						
62	-	G41206420100	SPRING	2						
63	-	G40026100020	PLAIN WASHER M20	4						
64	-	G41206420200	BRACKET	1						
65	-	G40020400014	NUT M14XP1.5	1						
66	-	G42385200730	SWITCH	1						1
67	-	G41221820200	PLATE,HEAT INSULATOR	1						
68	-	G40010100816	BOLT M8X16	2						
69	-	G40027100008	SPRING WASHER M8	2						
70	-	G40020100008	NUT M8	2						
71	-	G41301160200	MAT	2						

20. ENGINE RELATED



1C16
(1C02)
NPC-3661

20. ENGINE RELATED

99.01.28

(A)=YRM831VH (D)=
(B)= (E)=
(C)= (F)=

REF. NO.	LEV. 0	PART NO.	DESCRIPTION	-----Q'TY-----						I P U A R
				(A)	(B)	(C)	(D)	(E)	(F)	
1	.	G41312220100	PULLY(ENGINE	1						1
2	.	G41222224800	BASE,ENGINE	1						
3	.	G40010101025	BOLT M10X25	4						
4	.	G40027100010	SPRING WASHER M10	4						
5	.	G4030-10008	WASHER M8	4						
6	.	G40100000015	BOLT M8X25	4						
7	.	G40027100008	SPRING WASHER M8	4						
8	.	G4030-10008	WASHER M8	4						
9	.	G412022261001	WIRE FC420W,THROTTLE	1						1
10	.	G46066080000	PIN 6X19,FLAT HEAD	1						
11	.	G40026100006	PLAIN WASHER M6	1						
12	.	G40031199006	PIN 6,STPRD.STRAIGHT	1						1
13	.	G41222225100	STAY,TANK	1						
14	.	G40010101025	BOLT M10X25	2						
15	.	G40027100010	SPRING WASHER M10	2						
16	.	G4030-10010	WASHER M10	2						
17	.	G40010100820	BOLT M8X20	2						
18	.	G40027100008	SPRING WASHER M8	2						
19	.	G41222250100	PL.ASSY.,FUEL TANK	1						
20	.	G40010100816	BOLT M8X16	4						
21	.	G40026100008	PLAIN WASHER M8	4						
22	.	G40027100008	SPRING WASHER M8	4						
23	.	G41222261000	PAKING	3						
24	.	G41222260300	HOSE 8X14X650,FUEL	1						
25	.	G44816282000	BAND,JUBILEE	2						
26	.	G41222260400	COVER R,ENGINE	1						
27	.	G41222260500	COVER L,ENGINE	1						
28	.	G40010100816	BOLT M8X16	6						
29	.	G40027100008	SPRING WASHER M8	6						
30	.	G47022200010	WASHER 22X9X1.6	6						
31	.	G41202220800	STOPPER,THROTTLE	1						
32	.	G40010100614	BOLT M6X14	2						
33	.	G40027100006	SPRING WASHER M6	2						
34	.	G46066070000	WASHER 16X7X1.6	2						
35	.	G41206020600	LEVER,THROTTLE	1						
36	.	G40100000046	BOLT M12X55	1						
37	.	G40027100012	SPRING WASHER M12	1						
38	.	G40020100012	NUT M12	1						
39	.	G40026100012	PLAIN WASHER M12	2						
40	.	G40265000012	SPRING 12,BLLVL	2						
41	.	G402852212	NUT M12,HARD LOCK	1						
42	.	G40315260000	GRIP	1						
43	.	G41206020700	SPRING,LVR.THROTTLE	1						
44	.	G41206420300	BRACKET	1						
45	.	G42385200730	SWITCH	1						1
46	.	G40020400014	NUT M14,XP1.5	1						
47	.	G40100000016	BOLT M8X30	1						
48	.	G40020100008	NUT M8	1						
49	.	G40010100820	BOLT M8X20	2						
50	.	G40020100008	NUT M8	2						
51	.	G40027100008	SPRING WASHER M8	2						
52	.	G40329060000	CLAMP WIRE	4						
53	.	G41201150700	PL.ASSY.,COVER REAR	1						
54	.	G40010100816	BOLT M8X16	2						

** CONTINUE **

N135366

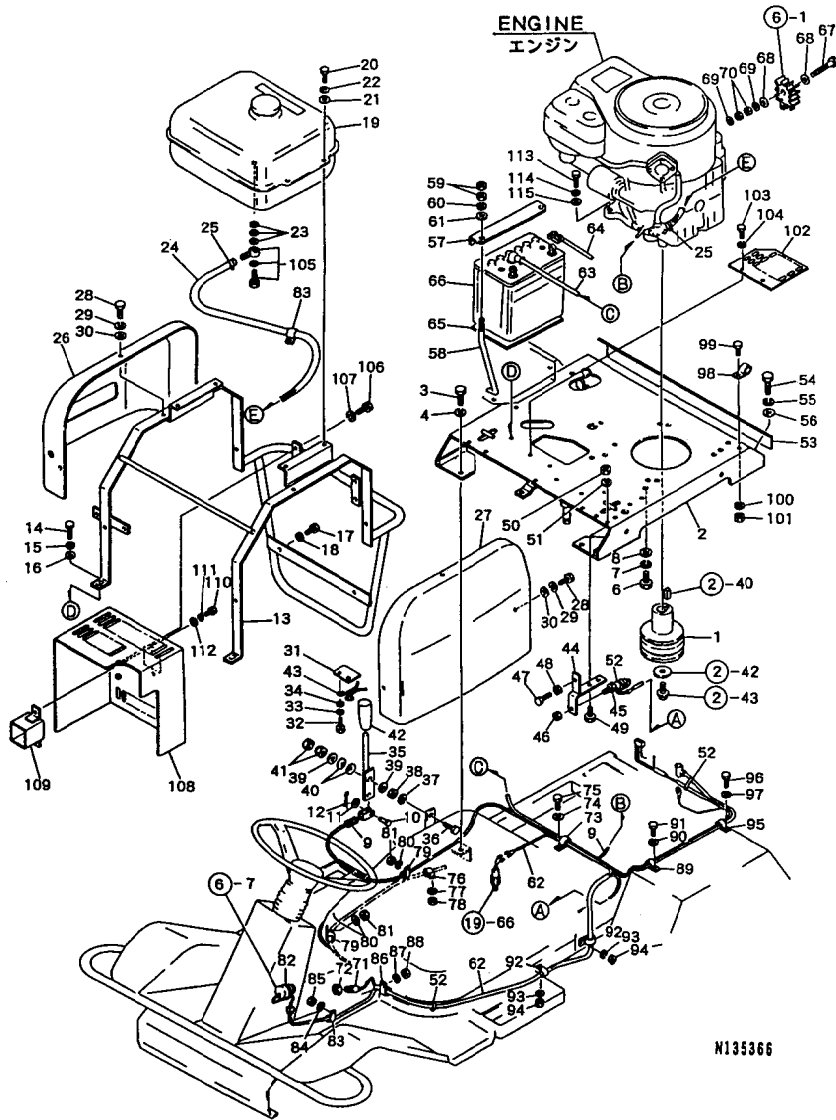
20. ENGINE RELATED

1001
(1002)
NPC-3661

20. ENGINE RELATED

99.01.28

(A)=YRM831VH (D)=
(B)= (E)=
(C)= (F)=



REF. NO.	LEV. 0	PART NO.	DESCRIPTION	Q'TY						I	P	U	A	R
				(A)	(B)	(C)	(D)	(E)	(F)					
55	.	G40027100008	SPRING WASHER M8	2										
56	.	G40026100008	PLAIN WASHER M8	2										
57	.	G41211120300	STAY	1										
58	.	G41208020100	SCREW,BATTERY	2										
59	.	G40020100006	NUT M6	4										
60	.	G40027100006	SPRING WASHER M6	2										
61	.	G40026100006	PLAIN WASHER M6	2										
62	.	G41228160300	HARNES A	1										
63	.	G41208165200	CORD,BATTERY(+)	1										
64	.	G41208163300	CORD,BATTERY(-)	1										
65	.	G41208163400	RUBBER 185X125X3,BAT	1										
66	.	G41208169000	BATTERY	1										
67	.	G40000006060	BOLT M6X60	1										
68	.	G40026100006	PLAIN WASHER M6	2										
69	.	G40027100006	SPRING WASHER M6	2										
70	.	G40020100006	NUT M6	2										
71	.	G42385201260	SWITCH	1										
72	.	G40020400014	NUT M14XP1.5	1										
73	.	G4194-00024	CLIP 22,U-SHAPED	1										
74	.	G40027100006	SPRING WASHER M6	1										
75	.	G40010100612	BOLT M6X12	1										
76	.	G4194-00008	CLIP 8,U-SHAPED	1										
77	.	G40027100006	SPRING WASHER M6	1										
78	.	G40020100006	NUT M6	1										
79	.	G4194-00012	CLIP 12,U-SHAPED	2										
80	.	G40027100006	SPRING WASHER M6	2										
81	.	G40020100006	NUT M6	2										
82	.	G4ML40-0019	TIE,INSULOCK	1										
83	.	G4194-00012	CLIP 12,U-SHAPED	1										
84	.	G40027100006	SPRING WASHER M6	1										
85	.	G40020100006	NUT M6	1										
86	.	G4194-00022	CLIP 22,U-SHAPED	1										
87	.	G40027100006	SPRING WASHER M6	1										
88	.	G40020100006	NUT M6	1										
89	.	G4194-00025	CLIP 25,U-SHAPED	1										
90	.	G40027100006	SPRING WASHER M6	1										
91	.	G40010100612	BOLT M6X12	1										
92	.	G4194-00015	CLIP 15,U-SHAPED	2										
93	.	G40027100006	SPRING WASHER M6	2										
94	.	G40020100006	NUT M6	2										
95	.	G4194-00025	CLIP 25,U-SHAPED	1										
96	.	G40010100612	BOLT M6X12	1										
97	.	G40027100006	SPRING WASHER M6	1										
98	.	G4194-00012	CLIP 12,U-SHAPED	1										
99	.	G40010100612	BOLT M6X12	1										
100	.	G40027100006	SPRING WASHER M6	1										
101	.	G40020100006	NUT M6	1										
102	.	G4122221000	COVER,ENGINE BASE	1										
103	.	G40010100816	BOLT M8X16	2										
104	.	G40027100008	SPRING WASHER M8	2										
105	.	G41222260900	HINGE	1										
106	.	G40010100816	BOLT M8X16	4										
107	.	G40027100008	SPRING WASHER M8	4										
108	.	G4122225200	COVER A,MUFFLER	1										

** CONTINUE **

N135366

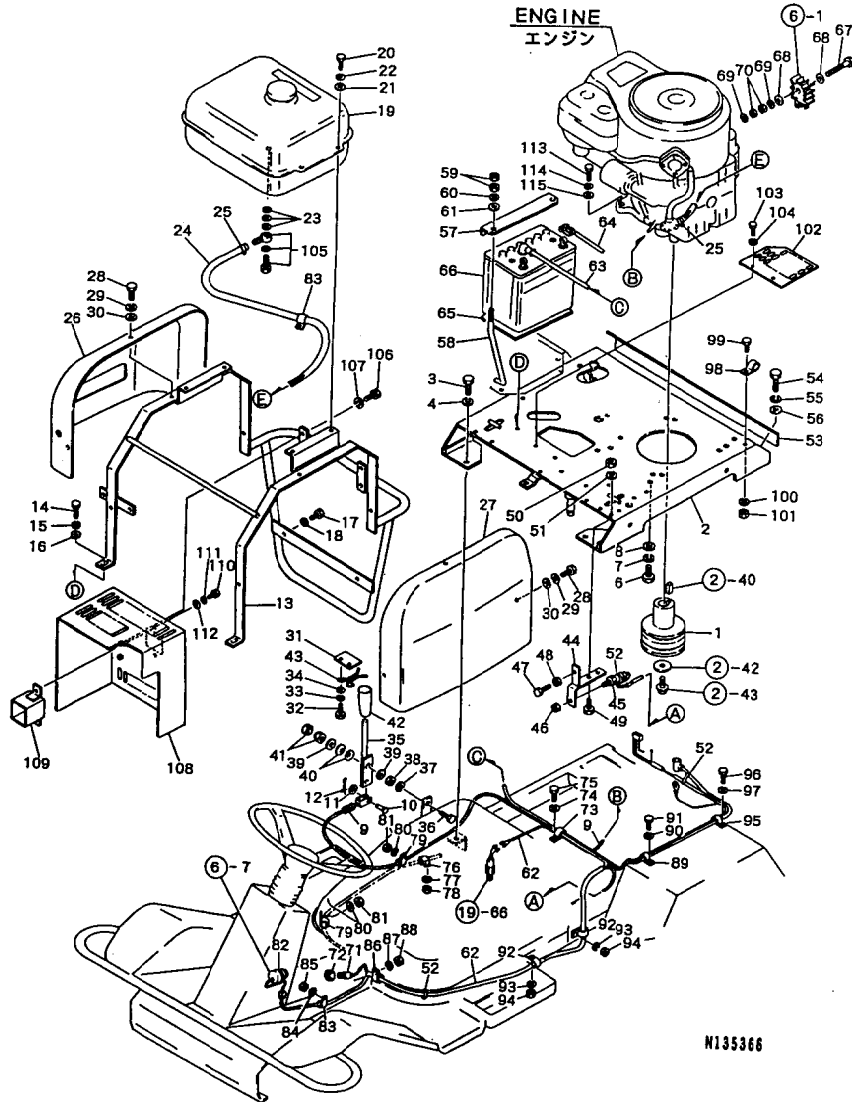
20. ENGINE RELATED

1002
1C02
NPC-3661

20. ENGINE RELATED

99.01.28

(A)=YRM831VH (D)=
(B)= (E)=
(C)= (F)=

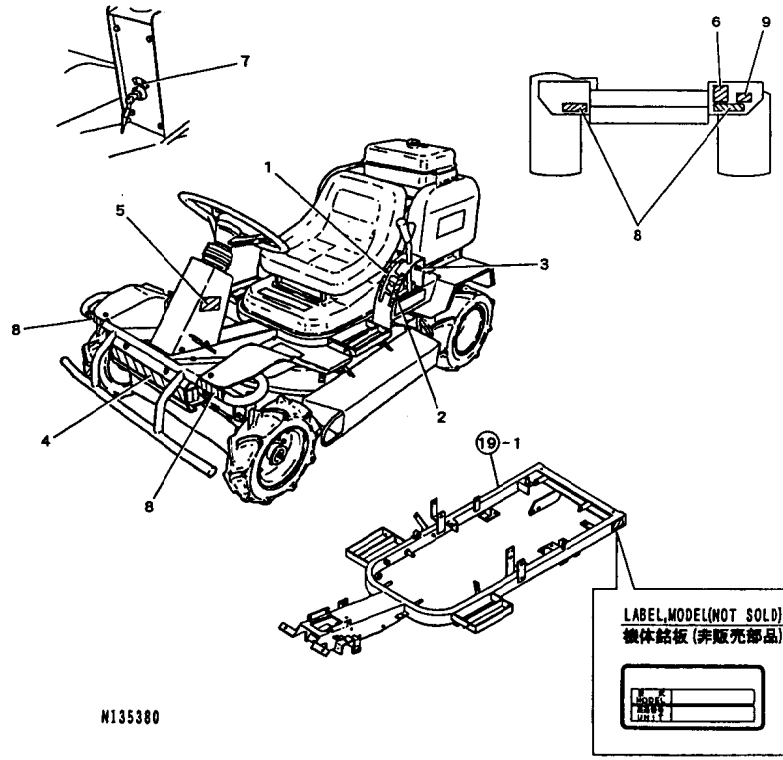
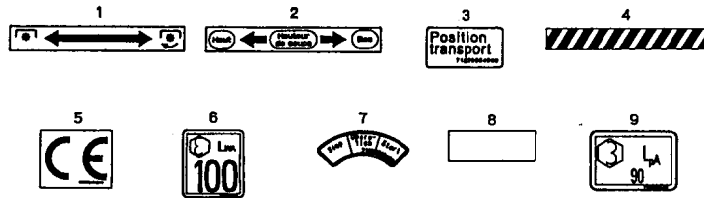


N135366

REF. NO.	LEV. 0	PART NO.	DESCRIPTION	-----Q'TY-----						I	P	U	A	R
				(A)	(B)	(C)	(D)	(E)	(F)					
109	.	G4122225300	COVER B,MUFFLER	1										
110	.	G40010100816	BOLT M8X16	2										
111	.	G40027100008	SPRING WASHER M8	2										
112	.	G40026100008	PLAIN WASHER M8	4										
113	.	G40100000016	BOLT M8X30	4										
114	.	G40027100008	SPRING WASHER M8	4										

N135366

21. LABELS



N135380

-----+
| 1003 |
| (1C02) |
+-----+
NPC-3661

21. LABELS

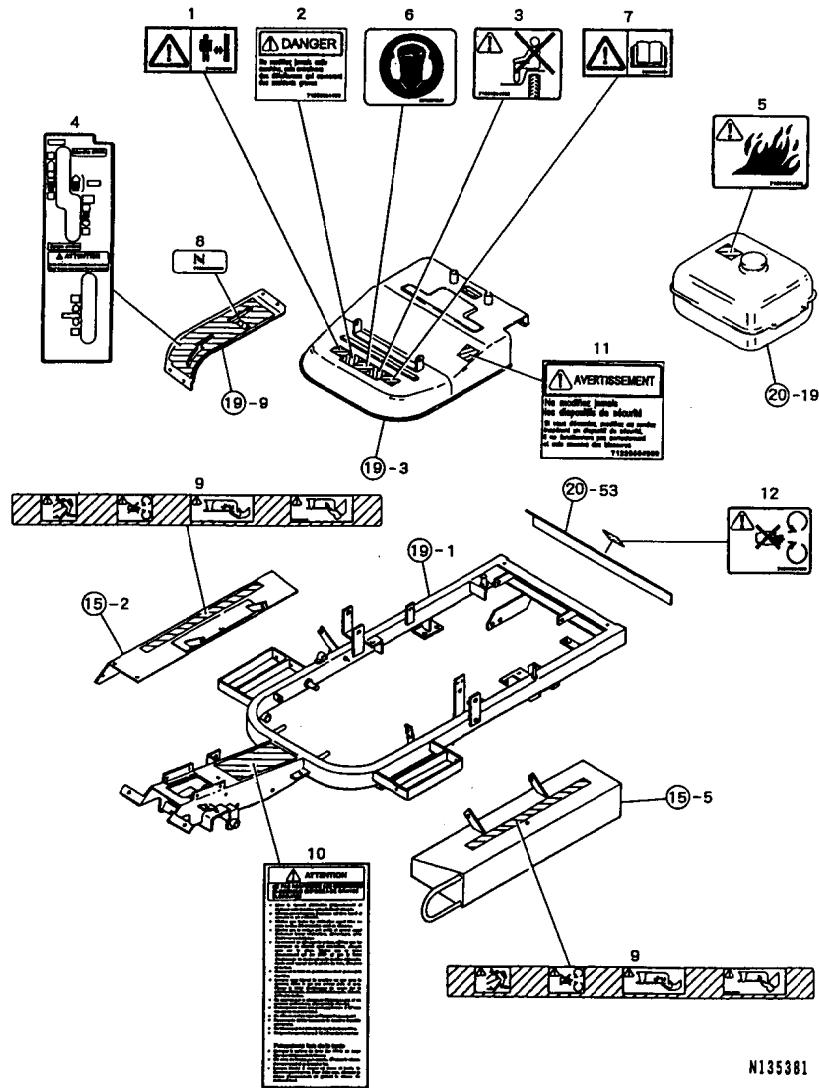
(A)=YRM831VH (D)=
(B)= (E)=
(C)= (F)=

99.01.28

REF. NO.	LEV. 0	PART NO.	DESCRIPTION	-----Q'TY----- I P/U A R					
				(A)	(B)	(C)	(D)	(E)	(F)
1	.	G41226563200	MARK, REAPING CLUTCH	1					
2	.	G41226565000	MARK, CUTTING HEIGHT	1					
3	.	G41226564900	MARK, POSITION TRANS.	1					
4	.	G41216566400	MARK, BLK. & YEL. STRP.	1					
5	.	G40736561200	MARK "CE"	1					
6	.	G41226565500	MARK, SOUND LEVEL	1					
7	.	G41226563400	MARK, KEY SWITCH	1					
8	.	G46316391000	TAPE, REFLECTION	4					
9	.	G41226565400	MARK, SOUND LEVEL	1					

N135380

22. LABELS (PRODUCT LIABILITY)



N135381

1004
1C02
NPC-3661

22. LABELS (PRODUCT LIABILITY)

99.01.28

(A)=YRM831VH (D)=
(B)= (E)=
(C)= (F)=

REF. No.	LEV. 0	PART NO.	DESCRIPTION	Q'TY						I	P	U	A	R
				(A)	(B)	(C)	(D)	(E)	(F)					
1	.	G41226565300	MARK,KEEP AWAY.	1										
2	.	G41226564400	MARK,NOT ALTER.	1										
3	.	G41226564600	MARK,NOT RIDE DOUBLE.	1										
4	.	G41226564200	MARK,CONTROL	1										
5	.	G41226564100	MARK,FIRE	1										
6	.	G40736561300	MARK,NOIZE	1										
7	.	G41226565200	MARK,MANUAL	1										
8	.	G41226562200	MARK,CHOKE	1										
9	.	G41226564300	MARK,CAUTION:ROTARY	2										
10	.	G41226564700	MARK,CAUTION:FLAME	1										
11	.	G41226564800	MARK,SAFETY DEVICE	1										
12	.	G41226564500	MARK,ROTARY OBJECT.	1										

N135381

PART NO.	GRP. NO.	REF. NO.	LOC NO.	PART NO.	GRP. NO.	REF. NO.	LOC NO.	PART NO.	GRP. NO.	REF. NO.	LOC NO.	PART NO.	GRP. NO.	REF. NO.	LOC NO.	
G4ML40-0019	20	82	1D01	G40010100820	19	43	1C14	G40020100008	17	58	1C10	G40024500008	15	89	1C07	
G400MB1420DU	18	15	1C11		20	17	1C16			60	1C10	G40026100006	14	84	1C04	
G400MB1610DU	18	17	1C11			49	1C16			84	1C10			94	1C05	
		18	1C11	G40010100825	15	7	1C06		18	6	1C11		15	73	1C07	
G400MB1615DU	17	72	1C10			15	1C06			10	1C11			77	1C07	
G400MB1620DU	14	22	1C03			19	1C06			13	1C11			80	1C07	
G400MB2025DU	14	25	1C03	G40010100860	14	66	1C04			21	1C11			83	1C07	
G40000006060	20	67	1D01	G40010101020	17	4	1C09			23	1C11		17	34	1C09	
G40010100612	14	92	1C05			9	1C09			26	1C11			42	1C10	
	20	75	1D01	G40010101025	15	33	1C06			28	1C11			45	1C10	
		91	1D01			20	1C16			31	1C11			77	1C10	
		96	1D01			14	1C16			36	1C11		18	66	1C12	
		99	1D01	G40010101030	19	47	1C14			42	1C11			81	1C12	
G40010100614	20	32	1C16	G40010101035	14	35	1C03			59	1C12			88	1C12	
G40010100616	17	40	1C10	G40010101080	17	17	1C09			61	1C12		20	11	1C16	
		44	1C10			21	1C09			76	1C12			61	1D01	
G40010100816	14	1G	1C03	G40010101090	16	34	1C08			79	1C12			68	1D01	
		26	1C03	G40010110620	14	59	1C04			83	1C12	G40026100008	14	58	1C04	
		7	1C03	G40010110830	14	45	1C04			109	1C13			91	1C05	
		89	1C04	G40010111025	15	41	1C06		19	13	1C14		15	8	1C06	
	15	36	1C06	G40010111030	17	12	1C09			17	1C14			12	1C06	
		97	1C07	G40010210830	14	43	1C04			25	1C14			16	1C06	
	17	2G	1C09			67	1C04			33	1C14			20	1C06	
		7G	1C09	G40015100315	15	60	1C07			60	1C15			37	1C06	
		66	1C10			18	54	1C11		70	1C15			92	1C07	
	19	7	1C14	G40015100610	19	5	1C14			48	1C16			100	1C07	
		14	1C14	G40020100003	15	62	1C07			50	1C16			103	1C07	
		19	1C14			18	56	1C12	G40020100010	14	16	1C03		16	45	1C08
		27	1C14	G40020100006	17	47	1C10			36	1C03			17	70	1C10
		35	1C14			20	59	1D01		38	1C04			74	1C10	
		39	1C14			70	1D01			70	1C04			81	1C10	
		52	1C14			78	1D01			75	1C04			82	1C10	
		68	1C15			81	1D01		15	94	1C07			88	1C10	
	20	20	1C16			85	1D01			16	35	1C08		19	11	1C14
		28	1C16			88	1D01			17	41	1C08			15	1C14
		54	1C16			94	1D01			20	20	1C09			21	1C14
		103	1D01	G40020100008	14	101	1D01			24	1C09			23	1C14	
		106	1D01			1H	1C03	G40020100012	19	48	1C14			29	1C14	
		110	1D02			2H	1C03		16	23	1C08			31	1C14	
G40010100820	14	9	1C03			28	1C03		20	38	1C16			37	1C14	
		20	1C03			29	1C03	G40020109110	16	5	1C08			41	1C14	
		11	1C06		15	55	1C04	G40020138016	18	4	1C11			45	1C14	
	15	55	1C07			10	1C06	G40020200014	14	99	1C05			56	1C15	
		70	1C07			14	1C06	G40020200016	16	4	1C08		20	21	1C16	
		87	1C07			18	1C06	G40020210016	15	43	1C06			56	1D01	
		90	1C07			22	1C06	G40020400014	19	65	1C15			112	1D02	
		101	1C07			57	1C07		20	46	1C16	G40026100010	16	19	1C08	
		104	1C07			66	1C07			72	1D01		17	14	1C09	
	16	39	1C08			71	1C07	G40022400010	14	13	1C03			18	1C09	
		44	1C08			98	1C07		16	12	1C08			22	1C09	
	19	10	1C14		16	43	1C08			15	1C08			18	95	1C12
		22	1C14			47	1C08			17	1C08			97	1C12	
		30	1C14			2H	1C09			26	1C08	G40026100012	14	34	1C03	
						7H	1C09	G40022400012	14	32	1C03		20	39	1C16	

PART NO.	GRP.	REF.	LOC.	PART NO.	GRP.	REF.	LOC.	PART NO.	GRP.	REF.	LOC.	PART NO.	GRP.	REF.	LOC.	
	NO.	NO.	NO.		NO.	NO.	NO.		NO.	NO.	NO.		NO.	NO.	NO.	
G40026100014	14	101	1C05	G40027100008	18	22	1C11	G40027151618	18	64	1C12	G40100000016	18	108	1C12	
G40026100020	14	24	1C03			27	1C11	G40030300320	18	71	1C12		20	47	1C16	
		19	63			30	1C11	G40030300325	18	43	1C11			113	1D02	
G40027100003	15	61	1C07			32	1C11	G40030300332	18	50	1C11	G40100000046	20	36	1C16	
		18	55			38	1C11	G40030300420	18	105	1C12	G40100000088	16	49	1C08	
G40027100006	14	60	1C04			41	1C11	G40030300520	18	72	1C12	G40101050870	14	56	1C04	
			93			60	1C12	G40030300525	18	44	1C11	G40150516010	17	31	1C09	
		17	41			77	1C12	G40030300532	18	51	1C11	G40150516025	18	65	1C12	
			46		19	8	1C14	G40030300625	16	29	1C08	G40151140015	17	38	1C10	
			52			12	1C14	G40030300525	16	30	1C08	G40151516020	17	25	1C09	
			19			16	1C14	G40031199006	14	85	1C04	G40160000506	14	54	1C04	
			20			20	1C14		15	74	1C07	G40200000021	18	8	1C11	
			60			24	1C14			78	1C07			34	1C11	
			69			28	1C14			81	1C07			85	1C12	
			74			32	1C14			84	1C07	G40200000062	14	40	1C04	
			77			36	1C14		17	35	1C09			72	1C04	
			80			40	1C14			78	1C10	G40265000012	20	40	1C16	
			84			44	1C14		18	37	1C11	G402852212	20	41	1C16	
			87			53	1C14			67	1C12	G4030-10008	17	64	1C10	
			90			57	1C15			82	1C12		20	5	1C16	
			93			61	1C15			89	1C12			8	1C16	
			97			69	1C15		20	12	1C16	G4030-10010	20	16	1C16	
G40027100008	14	100	1D01		20	7	1C16	G40031199008	17	71	1C10	G40300000002	15	30	1C06	
		1J	1C03			18	1C16			75	1C10	G4030103225S	15	51	1C06	
		2J	1C03			22	1C16	G40031199010	16	20	1C08	G40315260000	20	42	1C16	
		8	1C03			29	1C16		18	96	1C12	G40329060000	20	52	1C16	
		10	1C03			51	1C16			98	1C12	G4040106007A	15	25	1C06	
		30	1C03			55	1D01	G40036100015	14	82	1C04	G4040146004A	17	85	1C10	
		44	1C04			104	1D01	G40036100020	14	23	1C03	G4040146201A	17	49	1C10	
		46	1C04			107	1D01	G40036500032	17	50	1C10			62	1C10	
		57	1C04			111	1D02			63	1C10	G4040146202A	14	80	1C04	
		65	1C04			114	1D02	G40036500035	14	81	1C04	G4040146204A	14	4	1C03	
		68	1C04	G40027100010	14	17	1C03	G40036500062	15	27	1C06	G4040146206A	15	26	1C06	
		15	90			76	1C04	G40036800006	15	4	1C06	G40430010120	14	77	1C04	
			9		15	32	1C06	G40036800010	16	37	1C08	G40500003002	17	28	1C09	
			13			42	1C06		18	47	1C11			29	1C09	
			17			95	1C07	G40036800012	15	63	1C07	G40600030627	15	28	1C06	
			21		16	40	1C08		16	7	1C08	G40600356210	15	29	1C06	
			56		17	5	1C09			9	1C08	G40701860600	19	50	1C14	
			67			10	1C09			17	55	1C10	G40736561200	21	5	1D03
			88			13	1C09		18	16	1C11	G40736561300	22	6	1D04	
			91			19	1C09			35	1C11	G40905260000	19	55	1C15	
			99			23	1C09			92	1C12	G4106011	17	43	1C10	
			102		20	4	1C16			93	1C12	G41200220000	14	3	1C03	
			105			15	1C16			102	1C12	G41200220100	14	6	1C03	
16		42	1C08	G40027100012	14	33	1C03			103	1C12	G41200220500	17	1	1C09	
		46	1C08			15	50	G40036800015	17	68	1C10			6	1C09	
		17	2J			20	37	G40060670000	14	26	1C03	G41200260100	14	2	1C03	
			7J			14	100	G40064500100	15	23	1C06	G41200260101	14	1A	1C03	
			59			15	44	G40080320027	17	87	1C10			2A	1C03	
			65			17	37	G40080320076	17	86	1C10	G41200260102	14	1B	1C03	
			83			18	3	G40100000015	20	6	1C16			2B	1C03	
			18			17	26	G40100000016	14	27	1C03	G41200260103	14	1C	1C03	
			12			32	1C09		17	80	1C10			2C	1C03	

PART NO.	GRP. NO.	REF. NO.	LOC. NO.	PART NO.	GRP. NO.	REF. NO.	LOC. NO.	PART NO.	GRP. NO.	REF. NO.	LOC. NO.	PART NO.	GRP. NO.	REF. NO.	LOC. NO.
1Z9200-22273	1	11	1B03	1Z9203-32081	11	13	1B13	1Z9215-02193	2	12	1B04				
1Z9200-22274	9	17	1B11	1Z9203-60080	2	38	1B04	1Z9217-02023	8	40	1B10				
1Z9200-22277	11	14	1B13	1Z9203-72012	8	47	1B10	1Z9217-02081	6	20	1B08				
1Z9200-22310	1	12	1B03	1Z9203-72020	7	11	1B09	1Z9217-02087	10	24	1B12				
1Z9200-42083	1	13	1B03	1Z9203-72063	6	13	1B08	1Z9217-02088	10	25	1B12				
1Z9200-92004	10	15	1B12	1Z9203-72177	6	14	1B08	1Z9219-02011	8	41	1B10				
1Z9200-92015	8	10	1B10	1Z9203-72199	4	15	1B06	1Z9219-02066	8	48	1B10				
1Z9200-92021	10	21	1B12	1Z9203-72200	4	16	1B06	1Z9219-02167	6	21	1B08				
1Z9200-92080	8	24	1B10	1Z9203-82094	2	39	1B04	1Z9220-02029	7	25	1B09				
1Z9200-92081	8	25	1B10		6	15	1B08	1Z9220-02035	4	20	1B06				
1Z9200-92113	7	20	1B09	1Z9203-82101	2	40	1B04	1Z9220-02036	7	22	1B09				
1Z9200-92166	9	15	1B11	1Z9204-31263	1	15	1B03	1Z9220-02070	7	26	1B09				
1Z9200-92182	3	18	1B05	1Z9204-31266	1	16	1B03	22117-060000	8	51	1B10				
1Z9200-92212	10	8	1B12	1Z9204-32006	8	31	1B10	22137-050000	9	16	1B11				
1Z9200-92244	8	26	1B10	1Z9204-32113	3	16	1B05	22137-060000	7	29	1B09				
1Z9200-92308	1	14	1B03	1Z9204-92096	1	17	1B03	22217-080000	9	21	1B11				
	6	10	1B08	1Z9204-92097	1	18	1B03		11	19	1B13				
1Z9201-51193	2	16	1B04	1Z9204-92223	3	20	1B05	22372-060000	7	30	1B09				
	8	46	1B10	1Z9204-92227	1	19	1B03	24101-063074	1	24	1B03				
1Z9201-52120	7	10	1B09	1Z9205-51299	10	16	1B12	24190-100001	4	26	1B06				
1Z9201-52139	3	19	1B05	1Z9205-52072	2	41	1B04	26106-060102	4	21	1B06				
1Z9201-52146	11	15	1B13	1Z9205-52073	4	17	1B06		5	12	1B07				
1Z9201-52147	11	16	1B13	1Z9205-52083	10	17	1B12	26106-060142	5	14	1B07				
1Z9201-52167	6	11	1B08	1Z9206-32257	8	32	1B10		10	27	1B12				
1Z9202-22194	2	42	1B04	1Z9206-42101	8	33	1B10	26106-080252	1	21	1B03				
1Z9202-22218	11	17	1B13	1Z9206-62092	4	18	1B06	26106-080352	11	20	1B13				
1Z9202-22220	9	18	1B11	1Z9206-62211	4	8	1B06	26107-080402	4	24	1B06				
1Z9202-22229	6	12	1B08		28		1B06		11	21	1B13				
1Z9202-22231	8	27	1B10	1Z9207-02075	6	16	1B08	26206-080162	9	19	1B11				
1Z9202-52003	5	9	1B07	1Z9207-12099	6	17	1B08	26216-080202	1	23	1B03				
1Z9202-52210	2	17	1B04	1Z9207-12112	6	18	1B08	26557-040142	8	42	1B10				
1Z9202-52211	2	18	1B04	1Z9207-15170	6	19	1B08	26557-060082	4	25	1B06				
1Z9202-52212	2	19	1B04	1Z9208-12009	8	11	1B10	26706-080002	11	18	1B13				
1Z9202-52213	2	20	1B04		34		1B10	26716-080002	9	20	1B11				
1Z9202-52214	2	21	1B04	1Z9208-12036	10	22	1B12	26737-120002	10	29	1B12				
1Z9202-52215	2	22	1B04	1Z9208-12316	7	12	1B09	26756-060002	7	28	1B09				
1Z9202-52216	2	23	1B04	1Z9209-32069	8	35	1B10								
1Z9202-52217	2	24	1B04	1Z9209-32082	8	36	1B10								
1Z9202-52218	2	25	1B04	1Z9214-12112	2	7	1B04								
1Z9202-52219	2	26	1B04	1Z9214-32006	7	23	1B09								
1Z9202-52220	2	27	1B04	1Z9214-32142	8	37	1B10								
1Z9202-52221	2	28	1B04	1Z9214-32179	5	10	1B07								
1Z9202-52222	2	29	1B04	1Z9214-32182	5	11	1B07								
1Z9202-52223	2	30	1B04	1Z9214-42033	7	24	1B09								
1Z9202-52224	2	31	1B04	1Z9214-42037	8	38	1B10								
1Z9202-52225	2	32	1B04	1Z9214-42043	10	18	1B12								
1Z9202-52226	2	33	1B04	1Z9214-42160	8	39	1B10								
1Z9202-52227	2	34	1B04	1Z9214-42220	7	13	1B09								
1Z9202-52228	2	35	1B04	1Z9214-42266	7	14	1B09								
1Z9202-62156	2	36	1B04	1Z9214-42281	7	15	1B09								
1Z9202-62160	2	37	1B04	1Z9214-42323	3	17	1B05								
1Z9202-72003	8	28	1B10	1Z9214-42391	4	19	1B06								
1Z9202-72025	8	29	1B10	1Z9215-02182	7	16	1B09								
1Z9203-32067	8	30	1B10	1Z9215-02193	2	10	1B04								

TOTAL (ITEM= 647) (REF.= 1,008)



YANMAR AGRICULTURAL EQUIPMENT CO.,LTD.

1-32, Chayamachi, Kita-ku, OSAKA 530-8321, JAPAN
Tel:06-6376-6348